



**GAC MARINE L.L.C.**  
 PO Box 8101  
 Abu Dhabi  
 United Arab Emirates

Tel +971 2 501 4900  
 Fax +971 2 550 2895  
 Email [marine.ae@gac.com](mailto:marine.ae@gac.com)  
 Web [www.gac.com](http://www.gac.com)



## GAC55 FLAT TOP BARGE

### GENERAL:

Built	Batam, Indonesia, 1999
Flag	Panama
Class	B.V.

### MAIN DIMENSIONS:

Length Overall	43.89 m
Beam Moulded	15.24 m
Depth Moulded	3.05 m
Draft: Designed loaded	2.44 m
Draft: Light	0.46 m

### TONNAGE:

GRT	514 tons
NRT	154 tons
DWT	1,200 tons
Deck Capacity	5 tons / m <sup>2</sup>

### PLATING SCANTLINGS:

Deck	12 mm
Bottom	10 mm
Side	10 mm
Bulkhead	8 mm

### NO. OF BULKHEADS:

Longitudinal	2
Transverse	5

### NO. OF STANCHIONS:

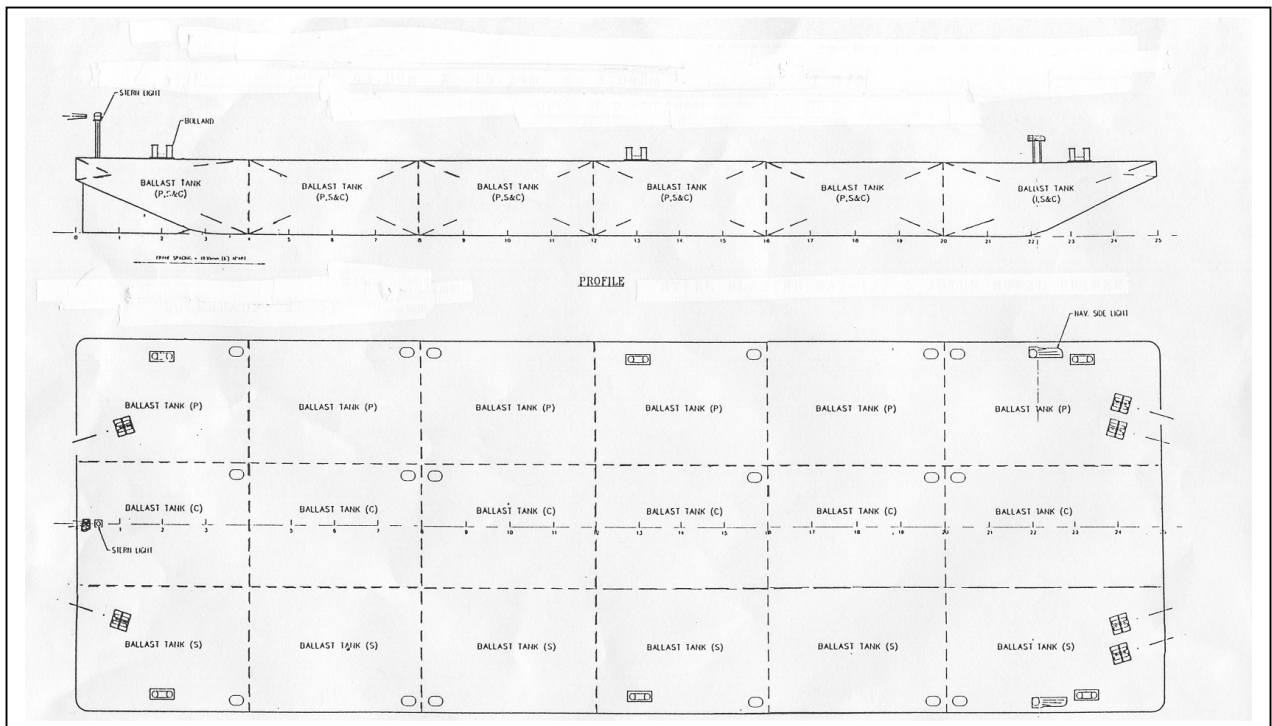
TBA	
-----	--

### NO. OF MOORING BOLLARDS:

6 Double mooring bits	
-----------------------	--

### TOWING BITS:

2 Smit towing bits at forward end	
-----------------------------------	--



This vessel specification is given in good faith and assumed to be correct but is not guaranteed