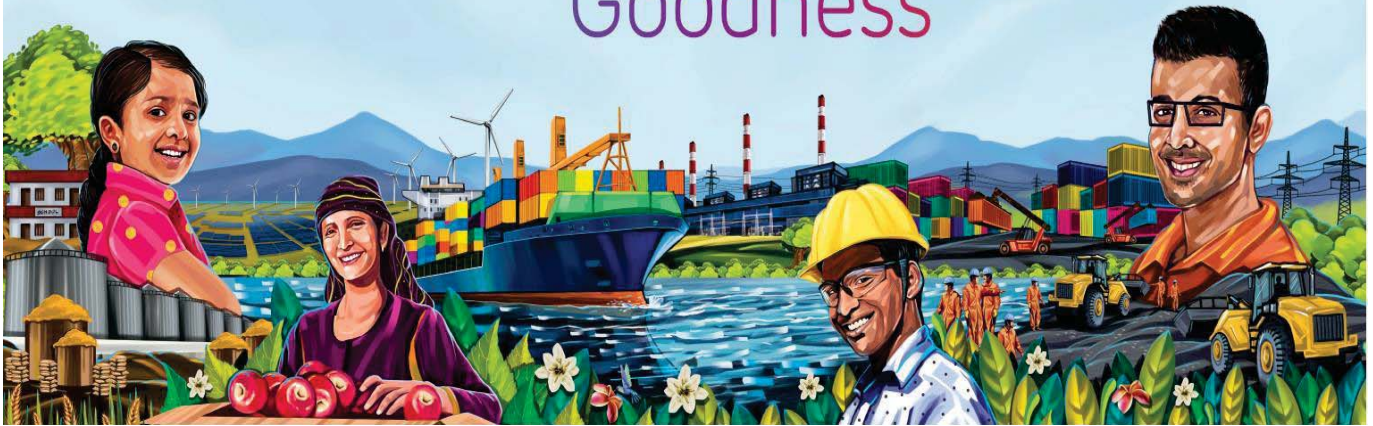


# Marine Infrastructure Developer Private Limited

adani

Growth  
with  
Goodness



**OUR VALUES: COURAGE, TRUST AND COMMITMENT**

Issue: **BPTS/KAT/01** | w.e.f **01<sup>st</sup> Apr 2024**

**Note:**

1. Changes in the existing BPTS from the previous edition have been updated. All trade notices issued till date have been incorporated in BPTS
2. The tariff and scale of rates are subject to revision. In view of the same, please refer to the trade notices for the latest rates tariff for a particular service or commodity.

[Index](#)

Table of Contents

**RECORD OF CHANGES ..... 3**

**INTRODUCTION.....4**

**SECTION A..... 5**

**I. POLICIES .....5**

**II. DEFINITIONS .....5**

**III. BERTHING POLICY ..... 11**

**1. Berthing Objective..... 11**

**2. Rationale ..... 11**

**3. Berthing scheme: First come First serve (FCFS)..... 11**

**4. General guidelines for all Vessels..... 12**

**5. Clarification regarding acceptance of Notice of Readiness time..... 13**

**6. Daily Port Berth Planning Meeting (Port Operation Center) ..... 14**

**7. Dry cargo breaks timings ..... 14**

**8. General conditions for berthing / un-berthing and cargo operations of Vessels .. 14**

**9. Free time allowed to vessels prior cargo commencement and after completion . 16**

**10. Lay-up berth hire ..... 16**

**11. Import / Export voyage in same VCN ..... 17**

**12. Anchorage charges ..... 17**

**13. Documents required in prescribed format through APMS/IPOS/SMART EPIC for declaration ..... 18**

|                       |  |           |
|-----------------------|--|-----------|
| 14.                   | Minimum Notice required for filing Pilot request through APMS/IPOS/ITUP..... | 19        |
| 15.                   | Swapping of Seniority.....   | 19        |
| 16.                   | Shifting of vessels.....   | 20        |
| 17.                   | Immobilization Permission .....  | 21        |
| 18.                   | Standard time for cargo commencement and completion .....                    | 21        |
| <b>SECTION B.....</b> |  | <b>22</b> |
| 19.                   | Berth Parameters, the indicative berth allocation parameters .....           | 22        |
| 20.                   | Berth allotment criteria .....   | 23        |
| 21.                   | Priority berthing guidelines for liquid tankers.....                         | 23        |
| 22.                   | Berthing / Un-berthing guidelines for vessels .....                          | 23        |
| IV.                   | <b>MARINE TARIFF .....</b>   | <b>24</b> |
| V.                    | <b>PIDC CHARGES .....</b>  | <b>40</b> |
| VI.                   | <b>TARIFF FOR SALVAGE OPERATION.....</b>                                     | <b>40</b> |
| VII.                  | <b>STEVEDORING TARIFF .....</b>  | <b>41</b> |
| VIII.                 | <b>CONTACT DETAILS .....</b>   | <b>61</b> |

## Record of Changes

| Trade notice no. | Issue Date | Changes   |
|------------------|------------|---|
|                  |            | Amended notes for Fuel Surcharge, Unberthing process charges, Vessel deficiencies, Tug/Boat hire charges, Oil Spill Pollution Response and Misc. service charges, |
|                  |            |   |
|                  |            |   |
|                  |            |   |
|                  |            |   |

### THE TARIFF CHANGE PROCEDURE:

The Berthing Policy and tariff Structure will be reviewed and updated BPTS sent in April and October month. The changes will be made basis the business scenario and cost of operations, keeping in view the best interest of the stake holders involved.

The changes also are reviewed from the perspective of implementation using the invoicing software.

Irrespective of the initiator of the change, the new changes will be reviewed by all SBUs and approved by the COO.

All the trade notices will be uploaded on website <https://www.adaniports.com/Downloads>

All the trade notices issued from April to Sep and Oct to March will be incorporated in BPTS, October and April month revision respectively. The BPTS to be read in conjunction with trade circulars issued subsequently by the port from time to time which would also be uploaded on to the website.

|                            |     |
|----------------------------|-----|
| Approved by                |     |
| Capt. Madhanmohan Thummala | COO |

## Introduction

### Marine Infrastructure Developer Private Limited

- Marine Infrastructure Developer Private Limited is located at Kattupalli and is about 30 Kms. North of Chennai and 4 Kms. North of Kamarajar (erstwhile Ennore) Port. MIDPL spread over an area of about 450 acres is one of the leading Ports in South India. MIDPL offers 24x7 congestion-free approach roads for seamless movement of cargo. It offers a wide basket of services such as a dedicated yard for Direct Port Delivery clearance, Direct Port Entry for factory stuffed/self-sealed export-laden containers and flexible carting. It is well connected to cargo clusters, national highways and container freight stations.
- Kattupalli Port has been operational since 2012 and about **11.45 MMT** of cargo was handled during FY:2023-24. Adani group's passion for converting opportunity into reality has led to MIDPL being conferred with the following awards.
  - TNPCB's Green Award 2018 for Environment Protection
  - EKDKN's Exceed Platinum Award 2018 under Energy Conservation Category
  - EKDKN's Exceed Platinum Award 2020 under Energy Conservation Category
  - Winner of 20th Annual Greentech Environment Award 2020 under Environment Protection Category
  - EKDKN's Exceed Platinum Award 2021 under Energy Conservation Category
  - Golden Peacock ENVIRONMENT MANAGEMENT Award 2021 for Port Sector.
  - Gold Award – Apex India Occupational Health and Safety award – 2018
  - EXCEED Award – Safety
  - "3 Star Rating" in recognition to EHS practices in the CII-SR EHS Excellence Award - 2018
- Some of the salient features of MIDPL are as follows.
  - MIDPL has a diverse cargo base including dry bulk, break bulk, project cargo, liquid and containers which diversify its business risks and is a unique model for private ports.
  - The Port has a well-developed basin for future expansion.
  - MIDPL has handled container vessels up to 340 meters in length.
  - 3 operational berths which has depth of 16.0 m for handling of vessels like dry bulk, break bulk, Project, RoRo, containers and Liquid Cargo.
  - Container terminal having a capacity of 1.4 million TEUs.
  - Dedicated Container Freight Stations (CFS) having easy access to port complex for smooth movement of containers.
- Logistical advantage due to network of unparalleled road, rail, sea, and air connectivity.
  - MIDPL provides logistic advantage of congestion free port at the Southeastern part of the country.
  - MIDPL has good connectivity to all CFS in Chennai and to NH 5 and NH 6.
  - Dry cargo infrastructure capable of handling all types of dry cargo.
  - Large storage capacity is available within the port in the form of open and covered warehouses.
  - MIDPL aims to handle **15.05** MMT of cargo in the year **2024-25**.

## Section A

### I. Policies

- **Security Policy**

“We are committed to provide a safe and secure working environment to all its employees, port users, cargo, ships and its personnel. This will be achieved by establishing and maintaining the required security measures to prevent unlawful acts against people, cargo and marine assets.”

“We shall strive to detect and deter unauthorized entrants and criminal activities in port facilities and react timely and correctly when such activities are encountered.”

- **Quality Health Safety and Environment Policy**

Adani is committed to Quality, Occupational Health, Safety and Environment in port business. We consider QHSE responsibilities are integral part of our business. To meet this commitment, port shall abide by the following principles:

- Satisfy our customers by maintaining a standard of service that consistently meets the agreed requirements;
- Focus on occupational health & safety of employees, pollution prevention, preservation & protection of environment at all times and in all circumstances;
- Identify and analyse the HSE risks arising from our activities to reduce them to the lowest possible levels;
- Eliminate or reduce the potential and severity of injuries, damages to material and non-material assets, and impact on environment & community arising out of our operations;
- Conform to applicable legislations, regulations and other requirements on QHSE and take additional measures considered necessary;
- Shall strive to achieve the QHSE goals and performance objectives, using effective management system; and reviewed to improve performance;
- Develop, conduct and promote education and training to improve QHSE performance;
- Continually improve QHSE management system by monitoring, evaluating and reviewing through the definition of operational standards, assessments and audits. Communicate our policies and standards to employees, suppliers, business partners and where necessary work with them to raise their standards

### II. Definitions

- **Agent:** A person authorized to transact business for and in the name of another person or company. Types of agents are: (1) Brokers, (2) Commission Merchants, (3) Resident Buyers, (4) Sales Agents, (5) Manufacturer’s representatives.
- **Beam:** The width of the ship.
- **Berth:** A space for a ship to dock or anchor.
- **Bonded Warehouse:** A warehouse authorized by Customs authorities for storage of goods on which Payment of duties is deferred until the goods are removed.
- **Break Bulk:** To unload and distribute a portion or all of the contents of a rail car, container,

## Berthing Policy & Tariff Structure

trailer, or ship. Loose, non-containerized mark and count cargo, packaged cargo that is not containerized.

- **Bunkers:** A maritime term referring to fuel used aboard the ship. In the past, fuel coal stowage areas aboard a vessel were in bins or bunkers
- **Bill of Lading:** A document that establishes terms of contract between Shipping and Transportation company.
- **Calendar day:** A Calendar daytime period is considered from midnight to midnight (i.e. 0001 to 2359hrs).
- **Cargo:** All goods, materials, merchandise, or wares carried on board an aircraft, ship, train, or truck.
- **CB:** Container Berth.
- **Commence work:** For Inward vessel, after POB manoeuvring command commenced by the pilot and for outward vessel, as confirm by the pilot, vessel is ready for unberthing in all respect.
- **CBM (CM):** Abbreviation for "Cubic Meter." CBM measurement is L x B x H.
- **CFS:** Abbreviation for "Container Freight Station." A shipping dock where cargo is loaded ("stuffed") into or unloaded ("stripped") from containers. Generally, this involves less than container load shipments, although small shipments destined to same consignee are often consolidated. Container reloading from/to rail or motor carrier equipment is a typical activity. These facilities can be located in container yards, or off dock.
- **Cold move:** The vessel's engine and steering gear should be available for use at all times during the manoeuvre. If it fails during berthing / un-berthing / shifting process, it will be treated as cold move and charged as per tariff.
- **Coastal :** "Coastal vessel" shall mean any vessel exclusively employed in trading between any port or place in India to any other port or place in India having a valid coastal licence issued by the Director General of Shipping/ Competent Authority.
- **CT:** Container Terminal.
- **Deadweight Tonnage (DWT):** Appropriate seasonal deadweight.
- **Detention for cargo on equipment:** Additional charges will be applicable on shippers or consignees for delaying carrier's equipment beyond allowed time. Demurrage applies to cargo; detention applies to equipment.
- **Draft:** Vertical distance between the vessel's water line and the lowest part of its hull.
- **Dunnage:** Any material or objects utilized to protect cargo. Examples of dunnage are blocks, boards, burlap and paper.

- **Drifting:** Vessel not at anchor or made fast to a berth. In simple words when a **vessel** is afloat and in no **way** is touching the ground or seabed.
- **Double Banking operation:** Tow vessels are banked together for cargo operation
- **ETA:** Expected Time of arrival.
- **Export:** Shipment of goods to a foreign country.
- **FCFS:** First Come First Served.
- **Freight Forwarder:** A person whose business is to act as an agent on behalf of the shipper. A freight forwarder frequently makes the booking reservation. In the United States, freight forwarders are now licensed by the FMC as "Ocean Intermediaries.
- **FRT: Freight Tones: CBM** or MT whichever is higher. Individually calculated for the packing list.
- **Foreign :** Foreign-going vessel" shall mean any vessel other than Coastal vessel.
- **GT:** The unit of measurement for the gross content of a Seagoing Vessel as referred to in the International Convention on Tonnage Measurement of Ships, London 1969 (Treaties journal 1979, no 122 and 194) as mentioned in the vessel latest International tonnage certificate.
- **Hold Washing/Cleaning:** "Normal Cleaning / sweeping / moping" requires the holds to be swept to remove all residues of the previous cargo, washed down and dried ready to receive a similar or compatible cargo
- **International Ship and Port Facility Security Code (ISPS):** It is an amendment to the Safety of Life at Sea (SOLAS) Convention (1974/1988) on minimum security arrangements for ships, ports and government agencies. Having come into force in 2004, it prescribes responsibilities to governments, shipping companies, shipboard personnel, and port/facility personnel to "detect security threats and take preventative measures against security incidents affecting ships or port facilities used in international trade."
- **IWPM / OWPM:** Inward Pilot Memo / Outward Pilot Memo.
- **Idling:** If a vessel is alongside the berth without carrying out any cargo operations.
- **Kg:** Kilogram.
- **LOA:** Length Overall.
- **LPG :** LPG is a type of fuel consisting of hydrocarbon gases in liquid form. LPG is an abbreviation for 'Liquefied petroleum gas'
- **LNG:** Liquefied natural gas is natural gas that has been converted to a liquid form for the ease and safety of natural gas transport.



- **LRF:** Laser Range Finder.
- **Monsoon Period for Kattupalli port:** Monsoon period at MIDPL Kattupalli Port is
  1. South West – Mid April to Mid August
  2. North East – Mid October to Mid January
- **Mtrs:** meters.
- **MW:** Megawatt.
- **NH:** National Highway.
- **O.D.C:** Over Dimension Cargo.
- **On Board:** A notation on a bill of lading that cargo has been loaded on board a vessel. Used to satisfy the requirements of a letter of credit, in the absence of an express requirement to the contrary.
- **P&I:** Protection & Indemnity.
- **POB:** Pilot onboard it is the time when pilot onboard before Berthing, Unberthing and shifting of the vessel.
- **PANS:** Pre-arrival notification of security.
- **Per day:** 24hrs calculated from commencement of the mentioned activity. Any period part thereof will be considered as full day and charged accordingly.
- **POC:** Port Operation Center.
- **Priority Berthing:**
  - **Ousting Priority:** If a vessel having an ousting priority for a given berth, then the working vessel at that berth will be removed from the berth to accommodate the vessel having ousting priority. The vessel working on the berth will however be removed only when it is safe to do so.
  - **Priority:** If a vessel having a priority for a given berth arrives, then she will berthed ahead of other vessel waiting for that berth once the berth falls vacant.
  - **Overriding Priority:** If a berth has been allotted to a specific cargo/receiver, then these vessels will have priority on that berth. However if a vessel with overriding priority arrives and requires the use of that berth, she will be berthed ahead of other waiting vessels having the same cargo/receivers.
- **Ro/Ro:** A shortening of the term, "Roll On/Roll Off." A method of ocean cargo service using a vessel with ramps which allows wheeled vehicles to be loaded and discharged without cranes. Also refers to any specialized vessel designed to carry Ro/Ro cargo.
- **Salvage operations:** Salvage is one service offered by the port under the general heading of emergency response to distressed vessels – that is, emergency response to render assistance to vessels in danger, or potentially in danger and/or the process of rescuing a vessel, her crew and cargo from hazard and danger in port or at sea.

- **TEU:** "Twenty feet Equivalent Unit." is an exact unit of cargo capacity often used to describe capacity of container ships.
- **Timings:** All timings will be based on Pilotage Certificate which is signed by the vessel's Master.
- **TPH:** Tons per hour.
- **Trans-shipment Port:** Place where cargo is transferred to another carrier.
- **VCN:** Vessel Call Number.
- **Warehouse:** A place for the reception, delivery, consolidation, distribution, and storage of goods/cargo.
- **Warping:** Physical shifting of the vessel maximum 100 mtrs ahead / astern on the same berth same berth.
- **WB:** West Basin – Not Applicable
- **Types of Ships:**
  - **Bulk Carriers:** All vessels designed to carry homogeneous cargo in bulk, such as fertilizers, ore, coal, minerals and grains.
  - **Freighters:** Break-bulk vessels both refrigerated and unrefrigerated, containerships, partial container ships, roll-on/roll-off vessels, and barge carriers. A general cargo vessel designed to carry heterogeneous mark and count cargoes.
  - **Barge Carriers:** Ships designed to carry barges; some are fitted to act as full container.
  - **General Cargo Carriers:** Break-bulk freighters, car carriers, cattle carriers, pallet carriers and timber carriers. A vessel designed to carry heterogeneous mark and count cargoes.
  - **Cellular Container ships:** Ships equipped with permanent container cells, with little or no space for other types of cargo.
  - **Partial Container ships:** Multipurpose container ships where one or more but not all compartments are fitted with permanent container cells. Remaining compartments are used for other types of cargo.
  - **Roll-on/Roll-off vessels:** Ships specially designed to carry wheeled containers or trailers using interior ramps.
  - **STS :** Ship-to-ship transfer operation is the transfer of cargo between seagoing ships positioned alongside each other, either while stationary or underway. Cargoes typically transferred via STS methods include crude oil, liquefied gas, bulk cargo, and petroleum products.
  - **Tankers:** Ships fitted with tanks to carry liquid bulk cargo such as: crude petroleum and petroleum products, chemicals, Liquefied gasses (LNG and LPG), wine, molasses, and similar product tankers.

- **Free pratique:** means permission for Ship/vessel to enter into the port limits, embark or disembark, discharge or load cargo or stores. Free Pratique is granted by Public health officer (PHO).
- **Quarantine:** Quarantine means the restriction of activities and/or separation of suspect persons who are not ill or of suspect baggage, containers, ship/vessel or goods from others in such a manner so as to prevent the possible spread of infection or contamination

### III. Berthing Policy

#### 1. Berthing objective

The objective of the Berthing Policy at Adani port is to provide well-defined, transparent, and non-discriminatory guidelines for the allocation of berths at the Port, based on vessel pre-notification, arrival, and administrative compliances.

#### 2. Rationale

The aim of this BPTS is to provide the user with relevant information for planning of a vessel call at the port and the charges that are likely to be incurred.

#### 3. Berthing scheme: First come First serve (FCFS)

The Port, as a general rule, adopts the policy of First Come First Serve (FCFS) basis. Container vessels are generally accepted basis their berthing windows as agreed between the Shipping Line and the concerned Container Terminal. For all cargo vessels, the following criteria will be used by the Port for determining the berthing priority:

- 3.1 The vessel has duly submitted the required Declaration / Information / PANS (ISPS) prior vessel's arrival / statutory compliance of government directives as issued from time to time. Vessel agents are required to declare their vessels through IPOS. All vessels related details are to be updated in vessel definition and vessel registration. The details should be entered as per the vessel's particular. In case any information is incomplete or missing in IPOS, the vessel's application for berth will not be accepted.
- 3.2 Vessel agent has to pay in advance all the charges as per the PAA raised by the port. The first PAA will be generated basis the berth hours expected by the agent subject to a minimum berth stay of 24 hours. In case the vessel completes her cargo operation in less than 24 hours, the additional berth hire charges will be adjusted in the final invoice. Maximum 6 digit digits after decimal (upward round off) will be consider in USD rate for invoicing of Marine charges.
- 3.3 Vessel has to give at least 5/3/2/1 days notices of Expected Time of Arrival (ETA), except vessels calling from nearby ports or the voyage duration is around 1 day, which are required to provide one day notice.
- 3.4 Vessel which has physically arrived within the port limits or at defined position and registered herself with Port Marine Control giving all the vessels particulars. Physical arrival means the time of arrival of vessel into Port Limits or at defined position.
- 3.5 Seniority of a vessel will be counted basis the time of her physical arrival, filing of IWPM, Cargo readiness, clearance from concerned department with respect to cargo readiness, receipt of pipe check list, verification of packing list and Terminal readiness whichever is later and applicable for that vessel.
- 3.6 Contractual agreements in place: Customers who have entered into long term contracts with the Port will be given priority in berthing as per their contractual terms & conditions. Port will not be liable for payment of any damages / claims / delays / detentions / demurrages etc. to vessels, whose berthing is delayed due to berthing of junior vessels which have been given priority in berthing as per their contractual agreements.

- 3.7 In case of pipe export vessels, seniority will only be considered for vessels if “80% Let Export Orders” of each type/size/ diameter of pipe is available in the Port for loading. If cargo is found to be less than the aforementioned quantity, such vessels will not be considered / discussed in Port berthing meeting and seniority of such vessels will only be considered upon meeting the aforementioned norms. Similarly for other export cargoes, seniority will only be considered provided 80% with LEO of the cargo is inside the Port.

#### 4. General guidelines for all Vessels

- 4.1 All the vessels calling Kattupalli Port has to send nomination to the port for obtaining vessel acceptance from the Port prior to arrival. Vessel will be accepted by the Port based on their declared berth parameters and marketing clearance.

- 4.2 The vessel's engine and steering gear should be available for use at all times during the manoeuvre. If a vessel's engine or steering fails during any point of the berthing / un-berthing /shifting manoeuvre, it will be treated as cold move and will be charged as per Port tariff.

Note: If vessel engine fails during outward Pilotage and cold move charges become applicable to such vessels, the vessel may be required to wait at anchorage until payment confirmation for cold move charges is received from the vessel owners.

- 4.3 Any vessel deficiency must be reported to the port well in advance through email to Portopscenter [akppl.marinecontrol@adani.com](mailto:akppl.marinecontrol@adani.com) or through VHF on Channel 73 to Kattupalli Marine Control prior berthing / un- berthing / shifting warping operations. Non reporting of such deficiency will attract charges as per BPTS vessel depending upon the type of deficiency. If engines or steering is not available then these manoeuvres will be considered as cold move and charged as per Port tariff.

- 4.4 A vessel refusing an allocated berth for any reason will lose her seniority.

- 4.5 The Port permits priority berthing for vessels carrying government cargoes (as may be declared from time to time) for which 100% additional berth hire may be charged by the Port as per the Management’s discretion. Priority berthing is also granted to long term contractual partners.

- 4.6 Priority berthing is also granted to long term contractual partners, as a general rule, ousting priority is not available. However if the port is forced to grant ousting priority to any vessel for whatsoever reason, all related charges including but not limited to viz. shifting, time lost, equipment idling etc will be payable by the vessel requesting ousting priority.

- 4.7 A ‘90 minute’ notice will be given to vessels for reaching PBG (Pilot Boarding Ground). Any vessel which requires more time than the above notice has to inform Port Control well in advance through her agent or via Port VHF working Channel.

- 4.8 If for any operational reasons or Port convenience, a junior vessel is berthed by superseding the seniority of other vessels, the junior vessel will revert back to her original position in the seniority list if she is shifted out to anchorage.

- 4.9 By making an application for, an accepting, the berth or other services and facilities in the port, the Vessel and the agent agrees to be bound by the provisions of the General Terms and Conditions for Services, Facilities and general tariff charges as issued and amended from time to time by the Port.

- 4.10 **Preferential berthing for Naval / Coast Guard Ships:** Naval vessels, Indian Coast Guard vessels and other Govt. vessels will be berthed subject to berth availability and Port discretion.
- 4.11 Adani Ports will endeavor services to all Indian Naval Ships (INS), one vessel movement at a time subject to uninterrupted movements of commercial vessels, berth availability and charges as per port discretion.
- 4.12 For all import steel and project vessels, vessel is to be declared with party wise packing list including receiver's details in an excel sheet. For all pipe export vessels, vessel is to be declared with duly filed "Pre Arrival Check list". In absence of same, APSEZ will conditionally declare the vessel and VCN will be provided which allows respective vessel to anchor at Kattupalli roads. However the vessel will be considered for berthing seniority only after berthing clearance is received from Dry cargo or Marketing Team as required by the Port. Above procedure will be followed for all vessels arriving in port for import/export of bulk cargoes.
- 4.13 All ships calling the port to get free pratique clearance from the Port Health Officer, prior their arrival. In case vessel requires boarding of PHO for clearance the port will take 1.5 hrs notices for berthing of vessel after it is cleared by PHO.
- 4.14 In case of project cargo, containers or ODC if a variation in Weight / Dimensions between declared cargo weight / Dimensions and actual cargo weight / Dimensions is more than 5% (Actual being higher than declared) then the port would impose an additional stevedoring charge equivalent to the existing tariff as per BPTS or tariff as agreed in applicable contracts.
- 4.15 Agent has to verify the Gross tonnage with Master prior declaration of vessel and submit latest tonnage certificate to the Port. In case of any wrong or late declaration of the amended Gross tonnage, it will be consider as "Wrong declaration of Gross tonnage". All the previous completed voyage invoices under the declaration of the old gross tonnage after the date of issue of the amended tonnage certificate will be revised as per the amended Gross tonnage.
- 4.16 HDFC Bank TT Selling Rate will be used for dollar denominated tariff (first rate card published every-day). In case of holidays, the previous working day HDFC Bank TT Selling rate will be used. The day of vessel berthing shall be used for determining the conversion / exchange rate. If vessel does not used berth then arrival date will be considered for exchange rate.

### 5. Clarification regarding acceptance of Notice of Readiness time

- 5.1 If Pilot boards the vessel on arrival, then the Pilot boarding time will be considered as the NOR time.
- 5.2 If vessel does not get Pilot on arrival and the vessel drops anchor in the port anchorage area, than the anchor dropped time will be considered as NOR time.
- 5.3 In case a vessel drops anchor in the port anchorage area but does not file Inward Pilot request then the time of filing the inward pilot request will be considered as NOR time.
- 5.4 In case a vessel physically arrives at a distance of 1 mile from Port's pilot station and waits for pilot to board the vessel without dropping anchor then the time of arrival to such position which is 1 mile from PBG will be considered as NOR time. The time of arrival along with NOR time has to be communicated and confirmed with Marine control on CH-73.

### 6. Daily Port Berth Planning Meeting (Port Operation Center)

The Port holds Daily Berth Planning Meeting at 1100 hrs on all working days, to plan the allocation of berths for the next 24 hours commencing from 1200 hrs on that day. The vessels agent and concerned parties shall be notified through auto Tentative Berth Plan by 1200 hrs and 1800 hrs through Port Operation Center. Allocation of berth to any vessels other than the FCFS policy will be purely on Port's discretion.

### 7. Dry cargo breaks timings.

- 7.1 0900 to 1000 hrs Shift change.
- 7.2 1300 to 1400 hrs Lunch Break.
- 7.3 2100 to 2200 hrs Shift change.
- 7.4 After completion of break timing, the work should start at the strike of the clock.

### 8. General conditions for berthing / un-berthing and cargo operations of vessels

#### 8.1 Vessel will not be considered for berthing if the Vessel:

- 8.1.1 Is poorly maintained and is considered unsafe for berthing by the Port.
- 8.1.2 Has invalid statutory certificate, including expired load test certificates of cargo gears.
- 8.1.3 Is blacklisted by Port State Control.
- 8.1.4 Is not manned as per Safe Manning Document.
- 8.1.5 If vessel does not produce proper proof to show that the vessel is suitably insured under DG Shipping authorized P&I club to cover the risk of damage to any port installations (fixed and floating), wreck removal, water, air Pollution and consequent civil liability and any other risks applicable. Restrictions / Instructions / Circulars issued by Government of India and State Maritime Board will be strictly adhered to.
- 8.1.6 Vessel should arrive and depart the port either on even keel or with a positive trim and minimum list. In no case should the vessel be trimmed down by the head or have a list of more than 0.3 degree. In case a vessel is found to be trimmed down by head, the movement of such a vessel may be cancelled for safety reasons as such vessels are very sluggish in handling which is not acceptable in a strong tidal port. Such vessels will be provided pilot only after they have corrected their list and trim. For container vessels which have trim up to 40 cm down by head shall be permitted on case to case basis on prior intimation to Port Control.
- 8.1.7 Draft survey of a vessel which is down by head and listed more than 0.3 degrees will not be conducted unless the vessel comes on even keel and reduces the list to 0.3 degrees. All delay, detention and cost arising from negative trim, list exceeding 0.3 degrees and inability to comply with minimum draft and trim requirement will be on vessel's account.
- 8.1.8 Delivery order has to be submitted by the agent to the Port prior berthing of the liquid vessel. Without DO, the vessel will only be berthed if the agent gives in writing that the agency agrees to pay the storage rent and / or any charges which may become payable due to the agent holding the delivery of the cargo.

- 8.1.9 Bulk and Break Bulk vessels will be berthed only after submission of discharging permission by Agent
- 8.1.10 Vessels shall be un-berthed only after the payment of all port charges, completion of formalities and issuance of the No Dues Certificate by the Port Authorities and Port Clearance from the customs. The agent who declares the vessel will remain responsible for payment of all marine related dues. No marine services will be provided to any other appointed agent unless he makes advance payment towards the same or gets the approval of the main agent to avail any marine related services.
- 8.1.11 In case any accident takes place on board the vessel in which port personnel / contractor staff are injured, the vessel will be held responsible for the same and will be liable for compensation. The amount of compensation decided by the port will be final.
- 8.1.12 Notwithstanding anything contained above, The Port shall retain the right to prioritize any or all the above conditions depending on new developments / special circumstances which may have changed from what was discussed during the Berth Planning Meeting. Decision of the port on berth planning and allocation will be final and binding on all concerned
- 8.1.13 "CONDITION OF USE" is a mandatory requirement and is to be filled up, signed, stamped and delivered to the pilot before commencement of Pilotage.
- 8.1.14 Tank cleaning, Purging, Gas Freeing or inerting is not permitted for tanker vessels at berth under normal conditions.
- 8.1 A vessel may be removed from berth for the following reasons.**
- 8.2.1 If the vessel is considered unsafe or hazardous for port safety.
  - 8.2.2 If the vessel is equipped with poor and unsafe cargo gear
  - 8.2.3 In case the weather deteriorates or is likely to deteriorate
  - 8.2.4 If the stowage of cargo is improper or incorrectly declared
  - 8.2.5 The vessel is under performing as per port norms or idling at the berth without proper justification, the vessel will be un-berthed and applicable shifting charges will have to be borne by the vessel
  - 8.2.6 Makes a request for early un-berthing
  - 8.2.7 Has made a wrong declaration
- 8.3** Performance of the vessels which are alongside the berth would be continuously monitored up to 08:00 hrs and will be discussed in the Daily Berth Planning Meeting. If a vessel is underperforming, the vessel's agent will be advised in writing to improve the vessel's performance. If by next day 08:00 hrs, the vessel's performance is still found to be unsatisfactory, a notice may be served to the Master to un-berth the vessel. Work stoppages beyond the control of the vessel or the Port will be excluded while evaluating the performance. Reasons such as lack of cargo and documents, poor or uneven stowage, unusually slow and unproductive cargo handling gears will not be accepted as valid reasons for poor performance of the vessel.
- 8.4 Vessels failing to meet the minimum required norms for loading and discharging will be de-berthed solely at the discretion of the Port.



8.5 The port shall remove a vessel from the berth on vessel account if, the vessel is unable to meet port's productivity norms due to failure of her equipment and the port is not in position to provide shore resource. The shifting of the vessel from berth will however be done only if another vessel arrives and requires the use of that berth.

- A shifting movement means:
  - Physical shifting of the vessel more than 100 mtrs ahead / astern.
  - From one berth to another berth or from one berth to anchorage and re-berth.
- A warping movement means: Physical shifting of the vessel maximum 100 mtrs ahead / astern on the same berth.
- A turnaround movement means: Un-berthing the vessel from its berth and re-berthing it at the same berth on a different side. Pilotage charges will be charged in case of turnaround movement.

### 9. Free time allowed to vessels prior cargo commencement and after completion

- 9.1 A vessel should be ready for commencement of cargo operation in all respect within 3 hours of all fast time and should be ready to sail out in 3 hours after cargo completion. In case the vessel unable to commence her cargo operation within 3 hours of all fast time and/or unable to file outward pilot request within 3 hrs of cargo completion, layup berth hire charges shall be applicable
- 9.2 If cargo stoppage is more than 2 hours due to failure of vessel equipment or gear, idling at berth or for any other reasons. Lay-up berth hire as per Port Tariff shall be applicable
- 9.3 Total cargo stoppages should not exceed 2 hours during the entire port stay of the vessel or else lay-up berth hire will become applicable
- 9.4 Whenever a vessel is given due notice by the Port to vacate the berth on account of either under performance or for safety reasons and the Master of the vessel refuses to vacate the berth after 2 hours of due notice by the Port, the Port will charge 2 times the berth hires as mentioned in the port tariff in addition to berth hire charges. Pilot detention and cancellation charges where applicable will be as per Port Tariff

### 10. Lay-up berth hire

- 10.1 In case of cargo stoppage which is attributable to failure of vessel's machinery and equipment or due to any reason / fault of vessel, layup berth hire will become applicable. The vessel will revert to normal berth hire when the vessel's machinery & equipment are operational or shore equipment deployed for resume the cargo operation on vessel request.
- 10.2 In case, a vessel is on layup berth hire, vessel Idling due to equipment failure and another vessel arrives and requires the use of same berth, the vessel will be shifted out to anchorage on vessel's / owner / agent account.
- 10.3 Additional stay at berth after cargo completion may be permitted on lay-up charges, if there is no vessel waiting for the berth. The request for additional berth stay at lay-up berth hire should be made at least 3 hours before cargo completion time. Vessel has to vacate the berth within 2 hours of receiving notice if the berth is required by Port or else "Non vacating of berth" charges as applicable will be applied on the vessel.
- 10.4 Layup berth hire charges will not applicable to container Vessels, unless the Port has requested the Vessel to vacate the berth and if Vessel refused to do so.

- 10.5 Layup berth hire will not be applicable on Tug which has towed the dumb barge into the port for cargo operations provided it is made fast alongside the dumb barge. Layup charges in case of additional stay on berth will be applicable only on the dumb barge on hourly basis. The tug will continue to be charged at normal berth hire rates.
- 10.6 Lay up berth hire will not be applicable if there are cargo stoppages due to bad weather condition/rains unless the cargo was already stopped prior start of bad weather/rains period. The timings will be taken from respective SBU.
- 10.7 Port will not charge layup berth hire charges on vessel which stay on the berth after cargo completion if vessels are receiving bunker / freshwater / waste collection. This will be subject to the following conditions:
  - 10.7.1 There are no vessels waiting for that berth.
  - 10.7.2 The concerned terminal / Marine department should not have planned any maintenance activity on that berth.
  - 10.7.3 The request for additional berth stay should be made at least 3 hours prior cargo completion so that other vessel movements at other berths are not adversely affected.
  - 10.7.4 The concerned vessel will get pilot only after other planned vessel movements have been carried out. Efforts will however be made not to unduly delay these vessels.

### 11. Import / Export voyage in same VCN

- 11.1.1 11.2 As a general rule after completion of discharge operations, a vessel has to vacate the berth for other vessels waiting at the anchorage. If the same vessel is fixed for loading, her arrival time for loading operation will be considered only after she has completed her previous cargo and is thereafter ready to load cargo in all respects.
- 11.1.2 In case a new VCN is issued upon request, the second call will be treated as a fresh call and all marine dues will be applicable to the vessel.
- 11.1.3 After completion of Import cargo, if vessel goes outside of the port limits for hold cleaning/operational requirements and coming back to load export cargo in same vessel, then New VCN will be provided for Export cargo operation. All the charges will be applicable as per BPTS.

### 12. Anchorage charges

Anchorage charges in case of Kattupalli Port is payable to TNMB. The Anchorage fees payable in respect of vessels arriving in the limits of Kattupalli Port and remaining on its own anchor per day or part thereof after the first thirty days shall be payable as per TNMB tariff. In respect of any vessels arriving in the port limits and lying idle on its own anchor in stream without loading or unloading cargo, the above charges are payable from the date of entry into the port limits.

### 13. Documents required in prescribed format through APMS/IPOS/SMART EPIC for declaration

The vessel's agent should submit the following documents in the prescribed format through APMS/IPOS for vessel declaration prior to physical arrival in Port. The vessel will be considered for berthing only after completion of declaration formalities and submission of pre-arrival documents as per Port Berthing Policy.

#### 13.1 General Documents required for all vessels declaration

- a. Berthing application - MAR/ F/ 003
- b. Vessel & cargo particulars part A - MAR/ F/ 011
- c. Vessel acceptance navigational checklist- Part B
- d. International Tonnage certificate
- e. International Air Pollution Prevention certificate (IAPP) certificate
- f. Ship Particulars
- g. P&I certificate & Liability for the Removal of Wrecks Certificate
- h. Certificate of Class
- i. Certificate of Registry
- j. Safe Manning Certificate
- k. Document of Compliance
- l. ISM Safety Management Certificate (SMC)
- m. Civil Liability Convention (CLC) 1992 Certificate
- n. Civil Liability for Bunker Oil Pollution Damage Convention
- o. International ship security certificate
- p. International oil Pollution Prevention Certificate
- q. Load line certificate
- r. Safety equipment certificate
- s. Safety construction certificate
- t. Safety Radio certificate.
- u. Ship sanitization control Exemption
- v. Ballast water Management system certificate
- w. Agency appointment letter from Owner of vessel
- x. Pre arrival notices of 5/3/2/1 days, PANS as per ISPS Code requirement

#### 13.2 In addition to general docs following additional documents required for Bulk & break bulk:

- a. Last port draft survey report for fertiliser vessel - As Applicable
- b. Fertiliser checklist - As Applicable
- c. Pre arrival pipe export stevedoring check list
- d. Stowage Plan.
- e. Discharge or loading sequence.
- f. IGM to be submitted 24 hrs prior arrival of vessel
- g. Cargo declaration with client details, Requirement of shore crane, Forklift, etc...
- h. Export General Manifest is to be submitted within 9 days of vessel sailing
- i. Complete Packing list for discharge / Load with Length x Width X Height (CBM) and Metric ton for calculating Package wise FRT (Freight Ton)." In case of Break Bulk cargo, above documents are required to be submitted by the vessel agent before berthing of vessel, both in Excel as well as PDF formats.

Note : The dimension to be considered should be of the biggest package and not of the smaller ones packed in the bigger package. Packing list submitted by the agent will be final. Receivers full details for each package to be submitted to port prior berthing. CIF/FOB value of the cargo for Imports/Exports to be provided by the concerned prior to berthing of vessel. In case of non-submission or incomplete documentation port will be constraint to berth the vessel.

**13.3 In addition to general docs following additional documents required for Liquid vessel:**

- a. Q-88 (All trading certificates should be valid).
- b. Stowage Plan.
- c. IGM to be submitted 24 hrs prior arrival of vessel.
- d. Cargo declaration with client details
- e. Temperature report for heated cargo
- f. Certificate of Origin
- g. Pre-arrival exchange information checklist
- h. MSDS for all cargoes (loading/discharging and transit cargoes)
- i. Export General Manifest is to be submitted within 9 days of vessel sailing.
- j. Two valid SIRE certificates

**13.4 In addition to the general docs following additional documents are required for LPG / LNG vessel: NA**

### 14. Minimum Notice required for filing Pilot request through APMS/IPOS/SMART EPIC

| MIDPL (Dry, Liquid and Containers)  |   |
|---|---|
| Inward Pilot request  | Minimum notice 1 hrs 45 minutes from Pilot request time |
| Outward Pilot request   | Minimum notice 1 hrs 30 minutes from Pilot request time |
| Pilot Cancellation and amendment can be accepted through email to akppl.marinecontrol@adani.com or through VHF on Channel 73 to Kattupalli Marine Control with minimum 1 hrs notice for IWPM and 45 minutes notice for OWPM. Only one cancellation or revision will be accepted. Thereafter minimum 2 hrs notice has to be given for revision of pilot request. A vessel whose OWPM & IWPM timing have been amended will be given a pilot only after all other planned movements have been carried out. |   |

### 15. Swapping of Seniority

Swapping of berthing-seniority between vessels may be permitted by the Port provided the agent or agents of the affected vessels and /or the respective cargo interests jointly request the Port for exchange of seniority in the pre scribed application form and agree to indemnify the Port against any claims whatsoever may arise there from. The agency which intends to swap the seniority of its vessels must take into consideration other agents whose vessel will be adversely affected due to swapping of seniority. LOA / Productivity of vessel being swapped will be considered before accepting the swapping request.

### 16. Shifting of vessels

- 16.1 No Charges shall be levied for shifting of a vessel for Port Convenience. "Port Convenience" is defined to mean the following:
- 16.2 If a working cargo vessel at berth or at mooring point is shifted for port to undertake hydrographic survey work, dredging, repair and maintenance of berth, or such other similar activities whereby shifting is necessitated, such shifting shall be considered as "shifting for port convenience". The shifting made to reposition such shifted vessel is also considered as "SHIFTING FOR PORT CONVENIENCE".
- 16.3 If a working cargo vessel is shifted from berth to accommodate on ousting priority vessels which are exempted from bearing shifting charges, such shifting shall be treated as "SHIFTING FOR PORT CONVENIENCE".
- 16.4 Whenever a vessel is shifted to accommodate another vessel carrying hazardous cargo which needs adjacent berth to be kept vacant for safety reasons is also considered as "SHIFTING FOR PORT CONVENIENCE".
- 16.5 Whenever a vessel is shifted from berth to accommodate another vessel which cannot be berthed at other berths due to draft and LOA restrictions vessel is considered as "SHIFTING FOR PORT CONVENIENCE".
- 16.6 Whenever a vessel is shifted to accommodate another vessel having priority at the adjacent berth and unless that vessel shifts, another vessel cannot be berthed at the adjacent berth due to length restrictions such shifting is also considered as "SHIFTING FOR PORT CONVENIENCE".
- 16.7 Whenever a vessel is shifted to another berth or at anchorage due to operational requirement, "SHIFTING FOR PORT CONVENIENCE".
- 16.8 Whenever a vessel is shifted to accommodate another vessel on ousting priority, the vessel shifted will be required to pay shifting charges.
- 16.9 Similarly shifting charges will also be applicable in the following cases of shifting:
  - 16.9.1 Non-cargo vessel which in any case have to vacate the berth when cargo vessels arrive.
  - 16.9.2 Vessels which are idling at berth without doing any cargo handling operations.
  - 16.9.3 Vessels which are under performing due to reasons attributable to either the vessel or the principals.
  - 16.9.4 Vessel vacating the berth due to bad weather/storm – 50% of the Pilotage charges will be applicable.
  - 16.9.5 Vessel vacating berth due to bad weather/storm under Planned/Unplanned cold move - Planned/Unplanned cold move charges will be applicable.

### 17. Immobilization Permission

If vessel wants to carry out M/E maintenance work during her Port stay the Port will grant Immobilization permission subject to the following terms and conditions on port's discretion. After completion of permitted time, fresh Immobilization requisition has to be filed for completion of the remaining work. The Immobilization should be completed prior to completion of cargo operations. The Master of the vessel should inform Marine Control on VHF Ch- 73 prior immobilizing the ships engine and after repairs have been carried out. In case the vessel is unable to sail out after cargo completion due to engine repairs in progress, then layup berth hire will be applicable.

- 17.1 Permission will have to be obtained in writing.
- 17.2 Master to ensure that the vessel remains safely alongside and if required to double up the moorings.
- 17.3 Port will give 4 hours' notice to get the vessel's engine ready in case of emergency.
- 17.4 In case, the vessel is unable to remain alongside the berth for whatever reason, any pilot / tug / mooring crew assistance provided by the Port will be on a chargeable basis.
- 17.5 Due care should be taken by ship's crew in tending the ship's mooring lines, as Kattupalli Port has strong tidal currents or off shore winds at some of the berths. The vessel will come off the berth in case the mooring lines are not tended properly.
- 17.6 Cancellation of Immobilization request shall be considered only if it is rendered 2 hours after all fast time or else charges will be applicable. If vessel is already at berth at the time of request then once permission granted the charges will remain applicable.

### 18. Standard time for cargo commencement and completion

| Sr .No. | Types                      | Case            | Cargo commencement  | Cargo completion   |
|---------|----------------------------|-----------------|---|--|
| 18.1    | Containers                 | IMPORT / EXPORT | Cargo commencement takes place after unlashng of containers the first container loaded or unloaded. | After handling of gearbox the lastcontainer loaded or unloaded.                                |
| 18.2    | Bulk                       | IMPORT          | First grab discharge into thehoppers or shore   | Full cargo discharge and after removal ofall equipment from the vessel.                        |
|         |                            | EXPORT          | First grab discharge into the ship'scargo hold.   | After completion of cargo loading,trimming and removal of all shore equipment from the vessel. |
| 18.3    | Break Bulk / Project Cargo | IMPORT          | Commencement of cargo Lashing removal.  | Full cargo discharge and after removal of all shore equipment.                                 |
|         |                            | EXPORT          | Commencement of dunnage Laying in the cargo hold.   | After completion of cargo Lashing and removal of all shore equipment.                          |

|      |        |        |  |   |
|------|--------|--------|--|---|
| 18.4 | Liquid | IMPORT | When cargo passes the shipsmanifold into the shore line. | Air blow completion time and when receiver gives the go ahead for hosesdisconnection. |
|      |        | EXPORT | Commencement time of Cargopumping from Terminal.         | When the vessel is informed to close the manifold valve.                              |

## Section B

19 Berth Parameters, the indicative berth allocation parameters are given in the following table

| Berth                        | LOA (Mtrs) | Displacement (MT) | Order of priority for Berth allocation | Present Liquid Pipeline Connectivity   |
|------------------------------|------------|-------------------|--|--|
| <b>MIDPL Kattupalli Port</b> |            |                   |  |  |
| <b>B-1</b>                   | 350        | 1,10,000          | As per declared policy.                | 1) General cargo berth. No bunker lines.   |
| <b>B-2</b>                   | 360        | 1,53,000          | As per declared policy.                | 1) General cargo berth<br>2) 1x 24" dia CS (POL –Black Oil-Insulated)<br>3) 1x12" dia. CS (POL-Black Insulated/Heat traced)<br>4) 1x12" dia. CS (WO Non-insulated) |
| <b>B-3</b>                   | 294        | 2,08,800          | As per declared policy.                | 1) General cargo berth<br>2) 1x 24" dia CS (POL –Black Oil-Insulated)<br>3) 1x12" dia. CS (POL-Black Insulated/Heat traced)<br>4) 1x12" dia. CS (WO Non-insulated) |

**Notes:**

- 19.1 The depths around the berths are checked periodically.
- 19.2 Non container vessels allocated berth at the container terminal shall vacate the berth for a container vessel which has priority at the berth. Shifting charges for the same shall be borne by the vacating vessel. A minimum of 6 hours' notice for shifting will be given to the vessel.
- 19.3 A minimum safe clearance of at least 35 meters will be maintained in between vessels.
- 19.4 A Minimum safe clearance of 75 meters is required during berthing of PCC (Car Carriers) While minimum safe clearance of 65 meters is required during un-berthing of PCC (Car carriers).

## 20 Berth allotment criteria

| BERTHING POLICY |                                  |
|-----------------|----------------------------------|
| Berth- 1        | Container Window vessels         |
| Berth- 2        | Container and Liquid cargo       |
| Berth – 3       | Liquid and Bulk/Break Bulk Cargo |

### Notes:

- 16.8** The port has capacity and necessary infrastructure to handle 1 container vessel, 1 liquid vessel and 1 bulk/breakbulk vessel at any given time. Decision to accept additional vessels will be taken on case to case basis by Marine Team.
- 16.9** The Port shall not be responsible for any delay in pilotage, berthing, ingress or egress for any reason whatsoever.
- 16.10** The port will not be liable for payment of any damages / claims / delays / detentions / demurrages etc. to vessels, whose berthing is delayed due to berthing of junior vessels which have been given priority in berthing as per their contractual agreements.

## 21 Priority berthing guidelines for liquid tankers

As per clause 4.5 mentioned above.

## 22 Berthing / Un-berthing guidelines for vessels

| Berthing:    |  |
|--------------|--|
| B-1          | POB - Tug and Barge combo – Day time.<br>POB - Other vessels - Any time.<br>Max LOA – 350 mts.<br>Wind restrictions: PCC, Tug and barge combo -20 Kts<br>Wind restrictions : Other vessels – 30 Kts<br>Draft of vesels: Upto 14.50 mts. – any time.<br>Draft of vesels: From 14.51 to 15.00 mts. – during top of high waters |
| B-2          | POB - Tug and Barge combo – Day time.<br>POB - Other vessels - Any time.<br>Max LOA – 360 mts.<br>Wind restrictions: PCC, Tug and barge combo -20 Kts<br>Wind restrictions : Other vessels – 30 Kts<br>Draft of vesels: Upto 14.50 mts. – any time.<br>Draft of vesels: From 14.51 to 15.00 mts. – during top of high waters |
| B-3          | POB - Tug and Barge combo – Day time. POB –<br>Other vessels - Any time.<br>Max LOA – 294 mts.<br>Wind restrictions: PCC, Tug and barge combo -20 Kts<br>Wind restrictions : Other vessels – 30 Kts<br>Draft of vesels: Upto 14.50 mts. – any time.<br>Draft of vesels: From 14.51 to 15.00 mts. – during top of high waters |
| Un-berthing: |  |
| B-1          | POB - Any time   |
| B-2          | POB - Any time   |
| B-3          | POB - Any time   |

Note: Berth B-2 and B-3 form a single quay of 654 meters



## IV. Marine Tariff

### A. PORT DUES: Payable directly to TNMB

|   |                  |
|---|------------------|
| PORT DUES (Payable for every Entry)                 | INR 10.40 Per GT |
| SURCHARGE - Surcharge on Port Dues 10% on Port Dues | 10% on Port Dues |

### B. PILOTAGE CHARGES PER GT OF VESSEL

#### i. CONTAINER VESSELS

| Size of Vessel        | FOREIGN RUN |                 | COASTAL RUN |                 |
|-----------------------|-------------|-----------------|-------------|-----------------|
|                       | Rate Per GT | Minimum Charges | Rate Per GT | Minimum Charges |
| Up to 3,000 GT        | Lump Sum    | USD 2,095       | Lump sum    | INR 41,889      |
| 3,001 to 10,000 GT    | USD 0.376   | USD 3,492       | INR 9.78    | INR 41,889      |
| 10,001 to 15,000 GT   | USD 0.433   | ---             | INR 11.17   | ---             |
| 15,001 to 30,000 GT   | USD 0.502   | ---             | INR 13.96   | ---             |
| 30,001 GT to 60,000 T | USD 0.712   | ---             | INR 19.54   | ---             |
| Above 60,000 GT       | USD 0.824   | ---             | INR 22.35   | ---             |

Includes one Berthing and one Un-berthing.

#### ii. OTHER THAN CONTAINER VESSELS

| Size of Vessel         | FOREIGN RUN |                 | COASTAL RUN |                 |
|------------------------|-------------|-----------------|-------------|-----------------|
|                        | Rate Per GT | Minimum Charges | Rate Per GT | Minimum Charges |
| Up to 3,000 GT         | Lump Sum    | USD, 2,431      | Lump sum    | INR 42,887      |
| 3,001 to 10,000 GT     | USD 0.428   | USD 3,861       | INR 10.01   | INR 42,887      |
| 10,001 to 15,000 GT    | USD 0.558   | ---             | INR 11.43   | ---             |
| 15,001 to 30,000 GT    | USD 0.703   | ---             | INR 14.30   | ---             |
| 30,001 GT to 60,000 GT | USD 0.858   | ---             | INR 20.01   | ---             |
| Above 60,000 GT        | USD 0.929   | ---             | INR 22.87   | ---             |

1. Includes one Berthing and one Un-berthing. Small Crafts will be charged on case-to-case basis
2. All the tugs will be used on chargeable basis for berthing / Unberthing vessel in Mediterranean moor position. It will be in addition to pilotage charges. Above Medi Moor charges are for reference only. Final Medi-Moor Charges will on be case to case basis.

### B1. FUEL SURCHARGE

|  |   |
|--|---|
| Fuel Surcharge on Pilotage \$ 0.1 per GT (Base rate) Applicable individually to all types of Pilotage which includes In & Out, Shifting, Warping, etc... | Charges for Fuel surcharge will be charged as per Trade notice MIDPL/TC/06/2022 dated 22nd June 2022. |
|--|---|

Note: w.e.f. 1st July'2022, the revised rate for fuel surcharges is available on our website under "Trade Notices" section, which can be accessed through <https://www.adaniports.com/Ports-and-Terminals/Kattupalli-Port/download>.

## Berthing Policy & Tariff Structure

### B2. PILOT ATTENDANCE CHARGES

|                          |                      |  |
|--------------------------|----------------------|--|
| Pilot Attendance Charges | <b>\$ 300 per hr</b> | When a pilot is required to stay on board the vessel on request of the Master or when the port decides to post a pilot for safety of the vessel / port.<br>Vessels calling for Mediterranean mooring at the berth, extra pilot will be posted on case to case basis. |
|--------------------------|----------------------|--|

### B3. PILOT EXEMPTION CHARGES

|                         |  |
|-------------------------|--|
| Pilot Exemption Charges | <b>\$ 900 / Exemption Certificate (Maximum validity 30 days)</b> |
|-------------------------|--|

### C. MOORING CHARGES

|  |   |
|--|---|
| <b>\$ 0.0410 Per GT per VCN (Minimum Charges \$ 210)</b> | Mooring charges is not applicable to STS and to vessels not using berth facilities. |
|--|---|

### D. SUSTAINABILITY CHARGES

|  |  |
|--|--|
| <b>\$ 0.03 Per GT per VCN (Minimum Charges will be \$ 200)</b> | Applicable to all vessel calling Kattupalli Port |
|--|--|

### E. PORT ENVIRONMENT PROTECTION SAFETY AND DREDGING CHARGES

|  |   |
|--|---|
| USD 400: Up to 10000 GT<br>USD 600: 10001 to 30000 GT<br>USD 800: More than 30000 GT | Charges applicable on Bulk, breakbulk, Liquid, RO-RO and all other vessels except Container vessels calling Kattupalli Port anchorage/berth and will be charged under VRC to VOA. |
| For 20 feet - \$ 0.307338<br>For 40 Feet - \$ 0.614676<br>For 45 feet- \$ 0.614676   | Container Vessels Local and restow.   |
| For 20 feet - \$ 0.614676<br>For 40 Feet - \$ 1.229352<br>For 45 feet- \$ 1.229352   | Container Vessels Transshipment - Double handling ( <i>Billed directly to container operating agent for respective container terminal</i> )                                       |

### F. BERTH HIRE CHARGES

| Container vessels - Foreign Run   | Container vessels -Coastal Run   | Other than ContainerVessels - Foreign Run                                | Other than Container Vessels - Coastal Run                                  |
|---|--|--|---|
| <b>\$ 0.0039</b> per GT perHour (Minimum Charges <b>\$ 805</b> per day) | <b>INR 0.11</b> per GT perHour (Minimum Charges <b>INR 13,420</b> per day) | <b>\$ 0.0054</b> per GT per Hour (Minimum Charges <b>\$ 805</b> per day) | <b>INR 0.13</b> per GT per Hour (Minimum Charges <b>INR 13,420</b> per day) |

**Note:** Mediterranean mooring will attract twice the berthing charges on case-to-case basis.

## Berthing Policy & Tariff Structure

### G. LAY UP BERTH HIRE

**Layup** (First line ashore to All cast off) Same rate as berth hire and applicable in addition to the berth hire.

Minimum berth hire charges is applicable for those vessels which call Kattupalli Port purely for lay-up berth hire)

- 1.1 If vessel unable to commence within 3 hrs of all fast and unable to book OWPM for sailing within 3 hrs of completion time then, lay-up berth hire becomes applicable after free times allowed to the vessels as per Point no. 9
- 1.2 Lay Up berth hire can be granted on sole discretion of port subject to availability of berth.
- 1.3 If vessel exceeds granted lay-up time, then the vessels will be shifted out at her own cost. Lay-up berth hire charged in addition to normal berth hire for the duration that the vessel requires the use of the berth but is not carrying out cargo operations.
- 1.4 The vessel is allowed to stay on the berth on payment of Layup berth hire provided the vessel agent has made an advance request for the same and there is no vessel waiting for that berth.
- 1.5 In case cargo stoppages more than 2 hours during entire operation. Lay-up berth hire will be applicable.

### H. NON BERTH VACATING CHARGES:

**Non berth Vacating charges:** : 3 times of the normal berth hire as mentioned in the port tariff point no. F. This charge is in addition to normal and Lay-up berth hire charges. (minimum berth hire charges will be applicable)

Whenever for any reason Port requires vacate the berth, the port will give 2 hrs notices to vacate the berth, If vessel fails to vacate the berth then Non berth vacating charges will be applicable

### I. PRIORITY BERTHING CHARGES FOR LIQUID VESSELS – Not Applicable

### J. ANCHORAGE CHARGES – Payable to TNMB

| Description           | Unit                    | Rate per GT in INR | Minimum Charges per day in INR |
|-----------------------|-------------------------|--------------------|--------------------------------|
| Vessels upto 500 GRT  | Per day or part thereof | 0.90               | 864                            |
| Vessels above 500 GRT |                         | 0.90               | 3456                           |

The Anchorage fees payable in respect of vessels arriving in the port limits of Kattupalli and remaining on its own anchor per day or part thereof after the first thirty days shall be payable as above.

In respect of any vessels arriving in the port limits and lying idle on its own anchor in stream without loading or unloading cargo, the above charges are payable from the date of entry into the port limits.

## Berthing Policy & Tariff Structure

### K. BERTHING PROCESS CHARGES :

|  |         |   |
|--|---------|---|
| Pilotage Cancellation Charges              | \$ 750  | If cancelled within 1.00 hrs from nominated pilot Boarding. In addition to cancellation charges, Tug charges will be applicable as per actual usage if tugs are mobilized as per clause number V. |
|  | \$ 1000 | If cancelled after pilot boarding. In addition to cancellation charges, Tug mobilization hourly charges will be applicable as per clause number V.  |
| Pilotage Detention Charges before boarding | NIL     | Up to 30 minutes delay from the nominated pilot boarding time.  |
|  | \$ 1500 | For subsequent delays on a slab of 30 minutes   |
| Pilotage Detention Charges after boarding  | \$ 1500 | Delay in approach due to any reason / fault of vessel more than 15 minutes detention charges will be applicable. For subsequent delays on a slab of 30 minutes.                                   |

### L. UN-BERTHING PROCESS CHARGES :

Vessel should be ready in all respect for sailing at the nominated Pilot boarding time. In exceptional cases, a maximum delay up to 15 minutes after Pilot boarding time will be allowed if the unberthing of the vessel is delayed beyond 15 minutes after POB timing due to non-readiness of the vessel, pilot detention charges will become applicable for the entire duration of delay including first 15 minutes.

|                               |         |   |
|-------------------------------|---------|---|
| Pilotage Cancellation Charges | \$ 600  | If cancelled within 45 minutes from nominated Pilot boarding. In addition to cancellation charges, Tug charges will be applicable as per actual usage if tugs are mobilized as per clause V |
|                               | \$ 1000 | If cancelled after pilot boarding. In addition to cancellation charges, Tug charges will be applicable as per actual usage as per clause V  |
| Pilotage Detention Charges    | \$ 600  | Upto 30 minutes delay from the nominated pilot boarding time till commence work   |
|                               | \$ 1500 | For subsequent delays on a slab of 30 minutes.  |

Note :

- Pilot cancellation and detention charges will not be applicable if the vessel is cancelled or delayed due to cold move / bad weather condition and it should be approved by concern HOD.
- Vessel should be ready in all respect for sailing at the nominated Pilot boarding time. In exceptional cases, a maximum delay up to 15 minutes after Pilot boarding time will be allowed if the unberthing of the vessel is delayed beyond 15 minutes after POB timing due to non-readiness of the vessel, pilot detention charges will become applicable for the entire duration of delay including first 15 minutes.
- In case movement is cancelled after Pilot boarding in berthing / unberthing / Shifting / Warping, then detention charges will not be applicable. However, tugs mobilization and Pilot cancellation after boarding will be applicable.

### M. SHIFTING / TURNAROUND CHARGES

|                               |                          |  |
|-------------------------------|--------------------------|--|
| Shifting & Turnaround Charges | Same as pilotage charges | However minimum pilotage charges will be applicable as per <a href="#">point B page 24</a> |
|-------------------------------|--------------------------|--|

## Berthing Policy & Tariff Structure

Note: 50% Pilotage charges will be applicable if Port decides to shift the vessel from berth due to bad weather & force majeure incident. Final decision of shifting the vessel will be as per Port's discretion taking into consideration the safety of port /vessel/crew, weather forecast etc.

### N. WARPING CHARGES:

|                 |                          |
|-----------------|--------------------------|
| Warping charges | 50 % of pilotage charges |
|-----------------|--------------------------|

### O. CARGO LIGHTERING CHARGES – NOT APPLICABLE

### P. DUMB BARGE

|                 |   |
|-----------------|---|
| \$ 2000 per VCN | <ol style="list-style-type: none"> <li>Port dues and pilotage charges will be additional.</li> <li>Activity includes berthing and un-berthing.</li> <li>Pilotage will start only when the barge is secured as a hip tow to the towing tug.</li> <li>If LOA is more than 70 mtrs and beam more than 25 mtrs, then acceptance will be on case by case basis.</li> <li>All barges must have a minimum of 6 mooring lines of adequate length i.e. minimum length of 40 mtrs with eye at one end. The agent must also arrange for 6 personnel to be placed on the barge for mooring operations.</li> </ol> |
|-----------------|---|

### Q. VESSEL DEFICIENCIES

|   |   |  |
|---|---|--|
| Restricted main engine power  | <b>\$ 2000 per movement</b>   | Vessel unable to provide 80% of rated M/E RPM  |
| Unsafe pilot ladder boarding / Disembarking arrangements.<br>(Fine will be levied for each such occurrence.)  | <b>\$ 500 Per incident</b>  | In case of unsafe pilot boarding / Disembarking arrangements, poorly maintained pilot ladder or inability to rig combination ladder when freeboard of vessel is greater than 9 meters. |
| Non-functional critical navigation Equipment which affects safe berthing / un-berthing.<br>(Charges per Movement for use of electronic navigational equipment.)   | <b>\$ 300 per Movement</b>  | Vessels with non-functional critical navigational equipment such as GPS, GYRO, Radar, Speed log, AIS, tachometer, ECDIS, Rudder angle indicator  |
| Charges for Failure to report critical equipment deficiency in advance.   | <b>\$ 500 per Movement</b>  | Berthing / Un-berthing of vessel liable to be cancelled if in port's opinion same is considered unsafe.  |
| Failure of mooring winches, windlass or capstan during berthing / un-berthing operations.   | <b>\$ 300 per failure</b>   | Vessel should be able to pass required no. of mooring lines and keep vessel safely alongside during entire stay  |
| Wrong declaration of draft which can jeopardize safety of vessel and Port assets.   | <b>\$ 500 per declaration</b>   | In case of wrong declaration of arrival / departure draft.   |
| <ol style="list-style-type: none"> <li>Garbage regulation violation</li> <li>Charges for wrong hoisting of Indian flag or soiled, poor condition.</li> <li>Cargo falling overboard,</li> <li>Non-compliance with port regulations.</li> </ol> | <b>\$ 500</b>   | For each incident.   |
| Anchor missing, Single Anchor Missing / anchor fluke damage   | <b>\$ 300</b> vessel deficiency charges applicable per movement for Single Anchor Missing / anchor fluke damage cases | An additional tug may be used on chargeable basis as per Port's discretion for Berthing/Unberthing of vessels if single anchor is  |

missing. In case of both anchors are missing additional tug will be used on chargeable basis.

## R. TUG / BOAT HIRE CHARGES

|  |   |   |
|--|---|---|
| Tug hire for transportation (per trip).                                | \$ 1800 Minimum charges for 3 hrs.                              | Minimum charges \$ 1800 for 3 hours and \$ 600 for every subsequent hour thereafter. If the same tug is used by two different parties for different vessels then each party to pay the said charges. (Maximum 10 persons at a time)   |
| Tug hire charges for Ship's Store / spares supply charges at anchorage | \$ 3800 for minimum 3 hours<br>\$ 600 for every subsequent hour | <ol style="list-style-type: none"> <li>1. Not applicable for Quantity less than 500 kg.</li> <li>2. Quantity upto 5 MT. Excess of 5 MT, USD 200 per ton will be applicable.</li> <li>3. Maximum quantity - not allowed more than 10 MT per trip.</li> <li>4. Tug hire for transportation charges will be applicable as per above tariff in addition to ship's store supply</li> </ol> |
| Service Boat (Per hour)  | ---   | Not applicable at Kattupalli Port   |

**Note:** If tug is hired for medical purpose (passenger/crew injury) then charges for same will be borne by the vessel agent.

The availability of tugs for transportation of passenger is not guaranteed as vessel movements have priority over such request. The Port shall not be responsible to the hirer for any loss or damage or injury to life or property arising directly or indirectly from the use of the tugs or delay in supply of the tugs or due to the failure of the tugs at any stage during the period of hire. The hirer shall indemnify the Port against all loss or damage or injury to life arising directly or indirectly from the use of the tugs during the period of the supply on hire to any property belonging to the port including the tugs or to any other person or property. The liability of the hirer shall not be affected by the fact that such loss or damage or injury to life or property may have arisen due to any act or default of any employee of the Port.

## S. COLD MOVE CHARGES

|                          |   |
|--------------------------|---|
| 1.1 Planned Cold Move    | Planned Cold move for a berthing vessel will be carried out only with prior approval of the concerned agency. However, no prior approval will be necessary for cold move of a vessel which is already at the berth. Port decision to vacate the berth (to accommodate any waiting vessel) will be final. Charges for each process of berthing / un-berthing / shifting, cold move charges will be in addition to the Pilotage charges. Planned cold move charges will be as given below.<br>All Tugs used for planned cold move will be charged on hourly basis as per port tariff. |
|                          | Planned cold moves are subject to port management discretion. Cold move charge as at the rate of 3 times the pilotage charges (However minimum pilotage charges will be used for calculation.)  |
| 1.2 Un planned Cold Move | If the vessel engine or steering gear fails to respond for any duration of time at any point of the berthing / un-berthing / shifting / warping man oeuvre (irrespective of the fact whether movement is on vessel/Agentor on port account), the same will be treated as a cold move and charged to the vessel/agent. Additional tugs if used for the movement will be charged as per port tariff on an hourly basis. Cold move charge is in addition to the normal Pilotage charge.  |
|                          | Unplanned cold move charge is at the rate of 1.5 times the pilotage charges (However minimum pilotage charges will be used for calculation.)  |

## Berthing Policy & Tariff Structure

### T. PIPELINE CHARGES FOR LIQUID TANKERS

|                         |   |
|-------------------------|---|
| <b>\$ 0.0373 per MT</b> | Pipeline usage charges applicable on all Liquid cargo Vessels calling at Kattupalli |
|-------------------------|---|

### U. IMMOBILIZATION AND ADDITIONAL CHARGES AS PER REQUIREMENT

|                                    |  |
|------------------------------------|--|
| <b>\$ 300</b> for the first 12 hrs | <p>Immobilization permission will be granted at port's discretion. An immobilization charge for the first 12 hrs is payable, and thereafter at the rate of <b>\$ 150</b> per 12 hours slab. Failure to take prior approval will result in additional charges as <a href="#">per note 2 of Page 33</a>.</p> <p><b>Note:</b> 1. Immobilization charges will not be applicable if same is carried out at anchorage.<br/>         2. Cancellation of Immobilization request shall be considered only if it is rendered 2 hours after all fast time or else charges will be applicable. If vessel is already at berth at the time of request then once permission granted the charges will remain applicable.</p> |
|------------------------------------|--|

### V. ADDITIONAL TUG HIRE CHARGES

|  |   |
|--|---|
| <b>\$ 1000</b> Per Hour or partthereof per Tug | Tug hire charges for any activity (berthing / un-berthing / shifting /warping / tug assistance at berth) other than personnel transfer.<br>In case of bad weather tug assistance will be provided on chargeable basis for any activity. |
| <b>\$ 2000 per hour per tug</b>                | For Escorting/Standby for towing operation outside port limit jobs subject to MMD and necessary approval  |

### W. CHARGES FOR OIL SPILL POLLUTION RESPONSE

|                         |   |
|-------------------------|---|
| <b>\$ 35100</b> Per Day | <p>USD \$35100 + charges as per actuals based on resources mobilized.</p> <p><b>Note:</b> Above charges only for cleanup efforts and does not relieve vessel from liability under the MS ACT, Bunker convention, CLC convention or any other legal instrument</p> |
|-------------------------|---|

### X. TARIFF FOR BOLLARD PULL TEST

|                   |  |
|-------------------|--|
| Bollard Pull Test | <p><b>a. \$ 2700</b> for tugs up to 100 tons.<br/> <b>b. \$ 5400</b> for tugs above 100 and upto 150 tons.<br/>         This is inclusive of Port Dues, VRC and bollard pull charges. (Berth stay of 12 hrs inclusive of Bollard pull test).</p> |
|-------------------|--|

### Y. TARIFF FOR DIVING OPERATIONS

|  |                                   |   |
|--|-----------------------------------|---|
| 1.1  | Diving Charges                    | \$ 4400 for 4 hrs. Thereafter 1500 for subsequent hours . plus DSV /Tug will be charges \$ 1000 per hours for normal diving operations assistance (Diving will only be done during slack tide).   |
| 1.2  | Videography Charges               | \$1800 per hr In addition to tug hire charges as above  |
| 1.3  | Diving services by outside agency | <p>a) License Fee of <b>\$ 800</b> per vessel per day.<br/>         b) If videography done by external agency, then \$ 500 will be applicable in addition to licenseFee.<br/>         c) The external agency should have certified divers.<br/>         d) In case a Service boat is required for carrying out diving operation on a ship which is alongside, the charges for the same will be <b>\$ 200</b> per 1 hour</p> |
| <p>Note: External diving agency /divers should submit valid diving license to POC. Prior starting diving operations, Permission from Marine control is to be obtained.</p> |                                   |   |

## Berthing Policy & Tariff Structure

| Z. MISC SERVICE CHARGES:  |  |                         |   |
|---|--|-------------------------|---|
| 1   | Creation of APMS/IPOS/SMART EPIC for NDC, service and voyage request for Declaration behalf of agent.  | <b>\$ 50</b>            | Per request [exception for agent's first five vessels]                          |
| 2   | Late declaration of vessel/ Non submission of documents by vessel:   | NA                      |   |
| 3   | Security Guard   | \$ 100                  | Per 8 hrs shift /per Guard. (Onboard vessel)                                    |
| 4   | Gangway Security Guard   | \$ 100                  | Per 8 hrs shift /per Guard. (onboard vessel)                                    |
|   | Security Vehicle (with driver).  | \$ 105                  | Per 12 hrs shift  |
| (i) Shift time: 0700 hrs to 1500 hrs (ii) 1500 hrs to 2300 hrs (iii) 2300 hrs to 0700 hrs |  |                         |   |
| 5   | Applying NDC for wrong VCN   | \$ 100 per VCN          |   |
| 6   | Oil rags removal & Disposal  | <b>\$ 450</b>           | Per CBM   |
|   | Garbage collection at berth  | <b>\$ 250</b>           | Per Trip  |
|   | Bio Medical waste  | <b>\$ 150</b>           | Per collection  |
|   | Sewage collection  | -                       | charges case to case basis  |
|   | Noxious liquid substance   | -                       | charges case to case basis  |
|   | Garbage collection at Anchorage(Quantity not to exceed 5 m <sup>3</sup> /per trip)   | <b>\$ 2050</b>          | Including Tug charges For maximum 3 hours and \$ 400 for every subsequent hour. |
|   | <p>a. The request for garbage collection should be placed 24 hours prior berthing. Garbage collection requests with less than 24 hour notice prior berthing will be serviced on the basis of availability of resources.</p> <p>b. Garbage collection will be done only during day light hours (0900-1700).</p> <p>c. Garbage collection at anchorage will be done subject to availability of tug.</p> <p>d. Hydra will be required at berth for off-loading garbage from the tug and same will be charged as per port tariff.</p> <p>e. Garbage of food waste will not be collected if it is found to be infested and / or with bad odour.</p> |                         |   |
| 7   | Gangway (Request to be made prior berthing). (Vessel is responsible to rig gangway safety net and ensure safe boarding and disembarking arrangement)   | <b>\$ 150</b>           | Per calendar day.   |
|   | Gangway Extension ladder   | <b>\$ 75</b>            | Per calendar day.   |
| 8   | Hydra  | <b>\$ 250 for 4 hrs</b> | Thereafter \$50 for every subsequent hour                                       |
| 9   | Crawler Crane  | NA                      | Service not available   |
| 10  | Mineral Water Supply   |                         | Not Applicable  |
|   | Fresh water at berth   | <b>\$ 7</b>             | Per MT (Minimum \$100)  |
|   | If supplied by outside agency. Fresh water handling charges.   | <b>\$ 2</b>             | Per MT (Minimum \$100)  |



## Berthing Policy & Tariff Structure

|  |   |                   |  |
|--|---|-------------------|--|
|  | Fresh water at anchorage [Only in case of urgent requirement] [Charges for maximum 4 hours and \$ 400 for every subsequent hour thereafter including freshwater charges]                                    | \$ 2340 per trip. | Quantity that can be supplied at Kattupalli anchorage is about 20 MT per trip depending on tugs pumping capability. Port will endeavour to supply FW as close as possible to 20 MT. If in case quantity supplied in excess of 20 MT then additional quantity will be charged as \$ 7 per MT. |
| (Request should be raised with a notice of 24 hrs. Quantity as determined by the port will be final) |   |                   |  |
| 11   | Permission for tank cleaning of HFO Tank/Cargo Hold /Cargo tank from the recognize vendors<br>(Squeezing of edible oil tank will not be considered as tank cleaning hence will not be charged as per above) |                   | \$ 1000 per permission per tank  |

|    |   |        |   |
|----|---|--------|---|
| 12 | Permission for cleaning of spillage cargo onboard / De-muncking of Ballast tank through external agency. (Non-hazardous cargo) only authorized vendors can carry out the work.<br>(Gate entry for labour will be addition to the above) |        | USD 500 per permission  |
| 13 | Magnetic Compass adjustment through port including compass adjuster fees.   |        | a. \$ 600 per vessel.<br>b. Tug charges will be charged as per tariff.                      |
| 14 | Hot work permission   | \$ 100 | Per 4-hour slab (minimum)   |
| 15 | Shore Generator for Welding work  | N. A   |   |
| 16 | Ambulance Charges (Limited to Kattupalli Port Premises)   | \$ 100 | If used for medical purpose (passenger/crew injury) same will be borne by the vessel agent. |

**Note 2:** A vessel will not undertake any activity which requires prior permission & payment of charges to the Port. Violation of the above will affect additional charges which will be thrice the charges which are applicable for that service.

|    |   |                     |   |
|----|---|---------------------|---|
| 17 | Invoice revision.   | \$ 100              | Per cancellation of Invoice.  |
| 18 | Separate / Split invoice charges  | \$ 60               | Per invoice   |
| 19 | VCN Cancellation.   | \$ 25               | Per VCN.  |
| 20 | Any query regarding final invoice, to be raised / initiated within 60 days of final invoice date else charges will be applicable. | \$ 100              | Per VCN.  |
| 21 | Permission for vessel name change / draft mark change on ship's hull within port limit  | \$ 500              | Note – painting done by external vendor, Gate entry charges will be applicable in addition to USD 500 |
| 22 | Photography Videography through the recognized port vendor  | \$ 1000 per 4 hours | Approval Subject to port discretion   |

Note- The charges for Marine entry passes will be applicable to all registered Vessel Agents, Contractors, Vendors, and Surveyors other than Adani contract staff.

## Berthing Policy & Tariff Structure

|    |   |                             |  |
|----|---|-----------------------------|--|
| 23 | Cherry Picker (Subject to availability)   | Rs. 2500/-                  | Per hour for equipment.  |
|    |   | Rs.4000/-                   | Per Shifting   |
| 24 | Bunker Handling Charges   | \$ 3 per MT (Minimum \$100) |  |
| 25 | 100 MT crane capacity crane on barge Hire Charges   | Not Applicable              |  |
| 26 | Mooring Ropes   | N.A                         |  |
| 27 | <ul style="list-style-type: none"> <li>a. For repairing of on board ship's equipment</li> <li>b. Gate In/Out permission for Landing gears / equipment / Line seal / stationary from ship. (Custom permission to be provided by gate in / out material)</li> <li>c. Transhipment permission for supply of goods like spares / ships equipment / medicines.</li> <li>d. Provision supply to vessels per shipping bill gate entry.</li> <li>e. Gate entry permission of labour/technician for work shop onboard i.e diving, cleaning, repairing, fumigation, etc. (Stay onboard permission mandatory for all type of workshop onboard valid till vessel stay)</li> <li>f. Permission for the external equipment entry in Port for cargo operation of other misc activities</li> </ul>  |                             | INR 10,000/-per transaction  |
|    | <p><b>Note 1:</b></p> <ul style="list-style-type: none"> <li>a. Only authorized ship chandlers will be permitted. Authorized ship chandlers list is hoisted on the Port website.</li> <li>b. If a registered vessel agent is nominated by the vessel owner to deliver stores to their vessel, the activity will be permitted subject to submission of appointment letter from the principals. No license fee will be charged in such cases, however ship chandelling charges will be applicable as is the case for registered ship chandlers.</li> <li>c. If in case, after completion of gate formalities at Port, vessel master rejects the supply or ship chandlers are unable to complete supply due to any reason prior to sailing of vessel, in that case neither the charges will be refundable nor it will be adjusted in the next supply which may please be noted.</li> <li>d. Ship chandelling charges will not be applicable to supply of BA charts and medicines up to 25 kg.</li> <li>e. 50% Discount will be given for supply through Transhipment Permission (T.P)</li> <li>f. All ship chandlers / shipping agent has to follow Port safety rules and SOP during the supply activity. In case of non-compliance of SOP, Port may cancel the ship chandling license immediately.</li> </ul> |                             |  |
| 28 | <p>IMDG: Class 1 &amp; 7 cargo is not acceptable for handling at Adani port. It may be permitted in transit if it is approved by Govt of India.</p> <ul style="list-style-type: none"> <li>1. Undertaking letter as per format of the port from the shipping line.</li> <li>2. Approval letter from Department of Defence Production, Ministry of Defence.</li> <li>3. Permission from Atomic Energy Regulatory Board (AERB) for class 7.</li> </ul>  |                             | USD 2000 per day (Including Fire tender and security standby arrangement) Time will be consider as per FL-berthing to LL-unberthing) |
| 29 | Crew change Facilitation charges  |                             | USD 50 Per crew change   |

## Berthing Policy & Tariff Structure

|    |   |  |
|----|---|--|
| 30 | Annual Agency Registration charges  | <b>Rs. 20,000/-</b> First time registration valid upto 31 <sup>st</sup> Mar of FY<br><b>Rs. 15,000/-</b> for renewal upto 31 <sup>st</sup> Mar of FY<br><b>Rs. 50,000</b> per Financial year for Fast Registration (within 7 days)<br><b>Rs. 5,000/-</b> Late payment charges for renewal registration |
| 31 | Permission for usage of Open loop scrubber within Port limit  | NA   |
| 32 | Permission of cargo hold washing and retention onboard within Port limit.   | USD 500 per permission   |
| 33 | Permission for Lifeboat Lowering within Port Limit  | USD 100 per activity   |
| 34 | Port Facility charges   | Case to case basis depends on the complexity of operations.  |
| 35 | Anchor Retrieval charges  | Minimum \$30,000 applicable and depends on the complexity of the operations.   |
| 36 | Port Medical Consultation   | \$ 50 per visit  |
| 37 | Hatch cover / Pontoon landing (For Dry cargo vessel)  | \$ 100 per hatch cover / pontoon   |
| 38 | Mooring winches charges   | Not Applicable   |
| 39 | Laser Range finder  | \$ 100 per VCN   |
| 40 | Sludge / slop removal charges   | \$ 30/- Per MT (Sludge / Slop / Bilge / Ballast water / Tank Cleanings)  |
| 41 | Sanitization of vessel gangway  | NA   |
| 42 | Tug boat sanitization charges   | \$ 200 per trip  |
| 43 | Vaccination charges for use of Port Facility  | NA   |
| 44 | Failure to report stowaway incident to port   | \$ 1000 per Incident   |
| 45 | Stowaway Onboard  | \$ 1000 per Stowaway (No disembarkation allowed of stowaway as per Govt. regulations)  |
| 46 | Wrong declaration of Gross Tonnage of Vessel  | \$ 1000  |
| 47 | Violation of Using Satellite phones banned by Gov. of India (will be reported to MRCC and Other Govt. agency in case of violations found) | \$ 1000  |
| 48 | Vessel / Vessel agency Engaged in illegal Activities reported by Govt Authorities / Vessel master   | \$ 500 Per Incident  |
| 49 | Failure to report release of CO <sub>2</sub> at berth or within Port limit (Not permitted without advance permission)                     | \$ 1000 per Incident (We Removed as per HOD)   |
| 50 | Shore crane hire charges ( for misc activities)   | \$ 300 per hours   |

**Note:** - Any service requisition (such as Gangway, Hydra, Ship Chandelling, Fresh Water and Hot Work) has to be made atleast 12 hrs prior vessel sailing and during office hours so that the service can be organized. GST will be charged on above all services as applicable. In case any services / permission request receives from vessel/ vessel agent apart from mentioned in BPTS, Port will provide service subject to availability of resources and charges will be provided based on complexity of services.

### AA. FIRE FIGHTING ASSISTANCE TARIFF

| S. No. | Service provided  | Duration                   | Charges |
|--------|---|----------------------------|---------|
| 1.     | Fire Fighting at anchorage/offshore through port tug in case of emergency.  | Per tug per hour.          | \$ 4500 |
| 2.     | Fire Fighting at alongside the berth on vessel or at on shore through port tug in case of emergency.  | Per tug per hour           | \$ 2000 |
| 3.     | Use of foam tender or water tender for fire call, spraying water and supplying water. (Fresh water charges USD 6 pre MT will be applicable in addition to Water tender charges) | Per one hour.              | \$ 130  |
| 4.     | Foam tender or water tender standby with crew.  | Per hour                   | \$ 50   |
| 5.     | Fire crew standby (during hot work, hazardous cargo handling etc.)  | Eight hour shift.          | \$ 165  |
| 6.     | Supplying water with pressure by using fire pump at liquid terminal and dry cargo area (Including the charge of water).   | Per hour.                  | \$ 215  |
| 7.     | Supplying sea water with pressure using fire pumps at jetty.  | Per hour.                  | \$ 60   |
| 8.     | Fire operator standby.  | Eight hour shift.          | \$ 25   |
| 9.     | Uses of Foam concentrate (AFFF or Alcohol Resistant Foam).  | One litre.                 | \$ 6    |
| 10.    | Provide fire extinguisher for hot work (for one 10 kg DCP extinguisher)   | Eight hour shift           | \$ 6    |
| 11.    | Providing fire extinguisher for hot work.   | For one day (three shift). | \$ 14   |
| 12.    | Providing portable fire pump for standby, firefighting and dewatering operation.  | Per hour.                  | \$ 25   |
| 13.    | Providing Smoke exhauster unit.   | Per hour                   | \$ 25   |
| 14.    | Providing SCBA set.   | One time use per Set.      | \$ 25   |
| 15.    | Imparting training (for outside agency) – maximum 4 hour limited to 20 persons.   | Per session.               | \$ 110  |
| 16.    | Fire crew for on board for fire fighting  | Per eight hour shift.      | \$ 300  |

Note: In case of emergency on board the vessel, the port will mobilize emergency response service and the charges will be debited to vessel agent account. Port will not take confirmation from agent in case of emergency

### BB. Facility for Discharge of Ship generated waste

Vessels have to discharge ship generated waste (Like sludge, Slop, Garbage, scrap etc.), which are generated during voyage period, at any port of call. Disposal of ship generated waste into sea water is strictly prohibited as per MARPOL 73/78 convention as amended. India is signatory to this convention of IMO (International Maritime Organisation). For collection and disposal of ship generated waste, as per MARPOL 73/78, it has been made compulsory for all the countries, who are signatory to IMO, to provide shore reception facility. Accordingly, MIDPL Kattupalli Port provides this facility to vessels calling at this port through the private firms registered with Relevant Pollution Control Board Permission. These private registered firms make the necessary arrangement for discharge / reception of the ship generated waste from the vessel.

## Berthing Policy & Tariff Structure

**CC. SPM TERMINAL: Not applicable**

**DD. SHIP TO SHIP TRANSFER OPERATIONS (STS) : Not applicable**

**EE. TARIFF FOR LNG TERMINAL – Not Applicable**

**FF. LIGHTERAGE OPERATION CHARGES AT ANCHORAGE FOR DRY CARGO VESSEL – Not Applicable**

**GG. TARIFF FOR COUNTRY CRAFT: Not Applicable**

**HH. TNMB Charges payable by all vessels**

**1.1 PORT DUES (Payable for every Entry)**

Port Dues

INR 10.40 Per GT

**1.2 SURCHARGE**

Surcharge on Port Dues

10% on Port Dues

**1.3 LANDING AND SHIPPING CHARGES**

| SI. No.     | For Cargo Other Than Containers  | Duration    | Rate            |
|-------------|--|-------------|-----------------|
| <b>A</b>    | <b>Iron and Steel and Other Metals</b>                                       |             |                 |
| 1           | Sponge iron, Pig iron and hard briquetted iron                               | Ton         | INR 86.40       |
| 2           | Hot rolled and cold rolled coils   |             |                 |
| 3           | Iron slabs, pipes, plates, sheets, wires, cables, etc.,                      |             |                 |
| 4           | All other iron and steel products and other metals                           |             |                 |
| <b>B</b>    | <b>Minerals</b>  |             |                 |
| 1           | Valuable stones like marble granite, etc., including mosaic and glazed tiles | Ton         | INR 69.15       |
| 2           | All other minerals   | Ton         | INR 60.50       |
| <b>C</b>    | <b>Machinery and Parts</b>   |             |                 |
| 1           | Machineries / Equipment  | Ton         | INR 103.70      |
| 2           | Spares and Tools   | Ton         | INR 86.40       |
| <b>D</b>    | <b>Food Grains and Food Products</b>   | Ton         | INR 43.20       |
| <b>E</b>    | <b>Cement</b>  | Ton         | INR 51.85       |
| <b>S.No</b> | <b>Classification of Cargo</b>   | <b>Unit</b> | <b>Rate INR</b> |

## Berthing Policy & Tariff Structure

|   |                       |      |              |
|---|-----------------------|------|--------------|
| 1 | Two / Three Wheelers  | Each | INR 172.80   |
| 2 | Light Motor Vehicles  | Each | INR 864.00   |
| 3 | Heavy Motor Vehicles  | Each | INR 1,728.00 |
| 4 | Automobile spares     | Each | INR 864.00   |
| 5 | Machinery / Equipment | Ton  | INR 103.70   |

For cargoes not mentioned above please refer to TNMB Scale of Rates.

### 1.4 ANCHORAGE FEES

| Description           | Unit                    | Rate per GT in INR | Minimum Charges per day in INR |
|-----------------------|-------------------------|--------------------|--------------------------------|
| Vessels upto 500 GRT  | Per day or part thereof | 0.90               | 864                            |
| Vessels above 500 GRT |                         | 0.90               | 3456                           |

In respect of any vessels arriving in the port limits and lying idle on its own anchor in Stream without loading or unloading cargo, the above charges are payable from the date of entry into the port limits.

### 1.5 MERCHANT OVERTIME CHARGES (MOT CHARGES)

| CATEGORY OF OFFICERS  | Fee Per Hour Or Part Thereof On Working Days |                  | Fee Per Hour Or Part Thereof On Holidays |                  |
|---|--|------------------|--|------------------|
|   | 0600 to 2000 Hrs                             | 2000 to 0600 Hrs | 0600 to 2000 Hrs                         | 2000 to 0600 Hrs |
| Administrative officer, Superintendent, Port Conservator, Junior Engineer (Electrical / Mechanical) | 103.70                                       | 138.25           | 172.80                                   | 207.40           |
| Assistant, Junior Asst., Asst. Port Conservator, Typist, VHF Operator                               | 69.15  | 86.40            | 121.00                                   | 155.55           |
| Office Assistant, Watchman, Assistant Light keeper, Wireman   | 51.85  | 69.15            | 86.40                                    | 103.70           |

## II. Other than MIDPL Port Movements

- For the purpose of accounting for L&T shipyard movement
  - 1) If vessel run is not known:
    - a) Commercial vessel will be charged as per rates applicable to Foreign vessels.
    - b) Government vessels like Coast Guard and Navy vessel will be charged as per rates applicable to Coastal vessels.
  - 2) If run is known: Tariff as per BPTS
 

For any pilotage movement other than at MIDPL port (L&T Shipyard, MFF, ECC etc...) the charges are inclusive of 1 hour of tug usage and 1 hour of pilot timings. Any usage beyond 1 hour period will be charged in hourly slab for each tug and pilot attendance as per the rates mentioned in relevant section. The Timings will be taken from Tug Engine start to Engine stop and mentioned in Tug usage record provided by Marine control. Pilot timings will be taken from POB to Pilot Disembarkation.
  - 3) In case of direct docking (inward and docking together) or direct undocking (undocking and outward together) charges for the service whichever is higher will be applicable
  - 4) In case of Pilotage Services, 50% of base Pilotage Charges are to be charged during Inward Pilotage and other 50% during Outward Pilotage. Additional charges (tug hours, Pilot Attendance, etc.), if any, towards Inward and/or Outward movement to be added to respective invoices as applicable.

Cold move charges are twice the applicable rate and inclusive of two hours of tug usage and two hours of Pilot timings as mentioned above.

### 1.1 DOCKING / UNDOCKING CHARGES AT SHIPLIFT

| Size of the vessel  | Hot Move            |           | Cold Move           |           |
|---|---------------------|-----------|---------------------|-----------|
|   | Rate per GT         | Minimum   | Rate per GT         | Minimum   |
| Upto 1,000 GT   | USD 600 (Lumpsum)   |           | USD 1,200 (Lumpsum) |           |
| 1,001 to 3,000 GT   | USD 1,500 (Lumpsum) |           | USD 3,000 (Lumpsum) |           |
| 3,001 to 10,000 GT  | USD 0.40            | USD 1,500 | USD 0.80            | USD 3,000 |
| 10,001 GT and above   | USD 0.30            | USD 4,000 | USD 0.60            | USD 8,000 |
| 1. Charges mentioned above for docking and undocking only inclusive of extra tug hire and extra pilot attendance charges.<br>2. Movement of vessels/ craft without propulsion or in the event of navigational equipment shall be treated as cold move.<br>3. The above tariff is applicable for both Foreign and Coastal run vessels. |                     |           |                     |           |

### 1.2 DUMBVESSEL CHARGES.

|  |  |
|--|--|
| As per table in section IV B (Breakbulk tariff) subject to minimum charges | Pilotage and Towage charges (In addition to charges payable for Towing Tug) Pilotage will start only when the dumb vessel is secured as a hip tow / shortened tow to the towing tug. This is in addition to the Pilotage charges for the towing tug. |
|--|--|

1. Mediterranean berthing will attract Pilotage Charges and all the tugs will be used on chargeable basis for berthing / Unberthing vessel in Mediterranean moor position. Exceptionally, barges for the Mediterranean moor, it will attract twice the pilotage charges and all the tugs used will be on chargeable basis for berthing/unberthing. Above Medi Moor charges are for reference only. Final Medi-Moor Charges will be on case to case basis.
2. When movement is required to have Two Pilots then extra charges shall be applicable for the second pilot on hourly basis of USD 100/Hour or part thereof.

## V. PIDC Charges – Not applicable

## VI. Tariff for Salvage operation

| Charges Vessel in Emergency and/or under Salvage operations ( Applicable w.e.f 07 <sup>th</sup> Jan 2023)   |   |
|---|---|
| \$ 2000 per tug per hour  | Tug hire charges for the Salvage operations assistance within the Port limits   |
| \$ 2000 per tug per hour  | For Escorting/Standby for towing operation out side port limit jobs subject to MMD and necessary approval                       |
| \$ 5000 per tug per hour  | For towing or engaged in salvage operation of any type of vessels outside port limit jobs subject to MMD and necessary approval |
| As per actual   | Business loss or claim from third party   |
| 1. \$2000 per hour with 100 tons crane.<br>2. \$3000 per hour with 200 tons Crane.<br>3. \$4000 per hour with 300 tons Crane.<br>4. \$ 5000 per hour with 400 tons Crane.<br>5. \$ 6000 per hour with any crane more than 400 tons. | Jack up Barge (JUB) With Crane mounted designed capacity, if Applicable   |
| \$ 1000 per hours per pilot   | Pilot Service attended charges for salvage and any emergency handling   |
| \$ 250 per hours  | Service Boat charges (Small wooden boat) , if Applicable  |
| \$ 500 per hours  | Flat Rack Barge hire charge, if Applicable  |
| 1. \$ 1000 per hours for Grab dredger<br>2. \$ 2000 per hour for Cutter suction Dredger (CSD)<br>3. \$ 3000 per hour for Trailer Head suction Dredger (THSD)  | Dredging Assistance hire charges for salvage operations or Wreck removal  |
| \$ 2000 per hour per location (Tug hire / Boat hire charges will be extra in addition to Diving operations charges)   | Diving operation charges for Salvage operations, if Applicable  |
| \$ 7500 per day (Only for one channel / Basin / berth pocket)   | Bathymetric Survey during, on or after the salvage operations, if Applicable  |
| \$ 1000 per day   | Manpower cost per day for Involved in Salvage operation (Max 10 persons) , if Applicable  |
| \$ 500 per day  | Administration charges  |
| \$ 100 per day per vehicle  | Vehicle hire charges used for Salvage operations, if Applicable   |
| 1. \$ 1000 per container<br>2. \$ 200 per Pkgs / Bags / Pcs / Units   | Penalty for Cargo falling overboard   |
| Technical / Legal Consultancy Fees for Liability Claim  | As per actual and invoice furnished by the Legal firm or by the consultants   |



## VII. Stevedoring Tariff

### CONTAINER VESSELS FOREIGN AND COASTAL

#### DEFINITIONS

|                                       |  |
|---------------------------------------|--|
| <b>Carrier</b>                        | Shipping Line, Vessel Owners, Charterers and their Agents  |
| <b>Container</b>                      | "Container" the standard ISO container, suitable for the transport and stacking of cargo and must be capable of being handled as a unit and lifted by a crane with a container spreader.   |
| <b>Customs Examination</b>            | Presenting the container and arranging for customs examination or inspection of cargo.   |
| <b>CY</b>                             | Container terminal and satellite yards or any other area within MIDPL  |
| <b>F.C.L.</b>                         | A loaded and sealed container received or delivered by intact by MIDPL   |
| <b>Free Storage</b>                   | A period of time which containers or cargo may be left in the CY area without incurring storage charges.   |
| <b>G.T</b>                            | Vessel's declared Gross Tonnage as recorded in the Certificate of Registry   |
| <b>Hazardous Container</b>            | "Hazardous container" means a Container containing hazardous goods as classified under IMO.  |
| <b>ICD</b>                            | Inland container Depot.  |
| <b>ICD Container</b>                  | Containers discharged from a vessel and placed in the custody of the MIDPL for the purposes of loading on a Train / road, inside the terminal or containers discharged from a train / road inside the inside the terminal and placed in the custody of the MIDPL for the purposes of shipment on a vessel. |
| <b>Landing &amp; Shipping Charges</b> | A charge levied against container/cargo or merchandise for passage on, over or through the MIDPL based on rates as prescribed by TNMB and as amended from time to time.  |

## Berthing Policy & Tariff Structure

|                                       |  |
|---------------------------------------|--|
| <b>L.C.L.</b>                         | "LCL" means Containers said to contain Less than full Container Load (Containerhaving cargo of more than one importer)   |
| <b>OOG/Over Dimensional Container</b> | Out of gauge" / "Over Dimensional Container" means a Container carrying over dimensional cargo beyond the normal size of standard containers and needing special devices like slings, shackles, lifting beam, etc. Damaged Container (including boxes having corner casting problem) and Container requiring special devices for lifting isalso classified as Out of Gauge / Over Dimensional Container. |
| <b>Per Calendar Day</b>               | "Per Calendar day" means per calendar day or part thereof.   |
| <b>Port</b>                           | "Port" means MIDPL   |
| <b>Port Dues</b>                      | Dues payable to Tamilnadu Maritime Board (TNMB) under Section 33 & 34 of the Indian Ports Act and as per Part V in First Schedule and as amended from time to Time.  |
| <b>Reefer</b>                         | "Reefer" means any Container for the purpose of the carriage of goods, whichrequire power supply to maintain the desired temperature.  |
| <b>Re-Export</b>                      | Means a container is discharged from a vessel and remained in the custody MIDPL until itis re-exported.  |
| <b>Re-nomination</b>                  | Means connecting a container, which has entered the terminal for export on a nominated Container vessel, to another vessel, before the arrival of the nominated vessel. Other vessel, before the arrival of the nominated vessel.  |
| <b>Restow</b>                         | The movement from one stowage position on the ship to another withoutdisconnecting rom the crane spreader  |
| <b>Shutout Container</b>              | Means a container, which has entered the terminal for export in a vessel and isnot connected to the vessel for any reason whatsoever, after berthing of the nominated vessel.  |
| <b>Stevedoring</b>                    | Moving of container or Cargo from ship to CY or vice versa.  |
| <b>Storage</b>                        | A fee levied to shipper, consignee or Carrier when the container or cargo remains inthe terminal in excess of the allowable free storage days.   |
| <b>Surcharge On Port Dues</b>         | Surcharge of 10% prevailing on the Port Dues payable towards dependents of Sailingcrew as prescribed by TNMB and as amended from time to time.   |
| <b>Transshipment</b>                  | Containers discharged from a vessel and placed in the custody of terminal for thepurposes of shipment on another vessel.   |
| <b>Coastal License</b>                | Coastal License is that issued by Director General of Shipping for dedicated Indiancoastalvessels  |
| <b>Coastal Vessel</b>                 | Coastal vessel shall mean a vessel exclusively employed in trading between any portor place in India to any other port or place in India having a valid coastal license issued bythe competent authority.  |
| <b>Coastal Voyage License</b>         | Coastal Voyage License is that issued by the Director General of Shipping for conversion of a Foreign going vessel of Foreign Flag when converted to a coastal run.  |
| <b>Customs Conversion Order</b>       | Customs Conversion Order is that issued to a foreign going vessel of Indian Flaghaving a General Trading License when converted to Coastal run.  |

### GENERAL

1. Containers less than and up to 20" in length will be reckoned as one TEU for the purpose of tariff.
2. Containers other than that of standard size requiring special devices / slings / handling will be treated as over dimensional cargo/container. Such containers will also include damaged containers and any other type requiring special devices.
3. HDFC Bank TT Selling Rate will be used for dollar denominated tariff (first rate card published every-day). In case of holidays, the previous working day HDFC Bank TT Selling rate will be used.
4. All charges worked out shall be rounded off to the next higher rupee on the grand total of each bill.
5. All invoices are issued as due on presentation. Failure to pay may cause a lien to be placed on the goods handled at the Terminal and the responsible party may be denied further use of the Terminal until all outstanding charges have been paid
6. (i) The user shall pay penal interest on delayed payments of any charge under this Schedule of Tariff. (ii)The rate of penal interest will be 15% per annum
7. An LCL / ICD Container coming in and going out of the MIDPL as a unit load will be regarded as an FCL for the purpose of levying charges.
8. Re-export containers shall pay the normal FCL container rates and one renomination / shutout charges also applicable but shall enjoy the same free storage period applicable to transshipment containers.
9. In cases where services provided by MIDPL to the Shipping Lines/ Importer/ Exporter are not covered by the rate structure, the charges for these services will be determined by MIDPL prior to providing the service.
10. GST other Govt. levies will be applicable at the prevailing rates at the time of billing.
11. Any spill cleanup charges accruing on account of handling of HAZ cargo, disposal of the HAZ waste to a govt. approved waste handling facility including transportation to such facility shall be borne by the customer (Container Operator )
12. Adequate and sufficient insurance cover to be obtained by the customer for all laden container stored in Terminal.  
  
MIDPL shall not accept liability, unless loss / damage is proven due to fault / negligence of MIDPL for any loss to cargo and/or property due to Acts of God, Flooding, Rains, Fire, Earthquake, War, Riots or Civil Disobedience, Terrorism, Acts of Governments Normal Perils, Loss / Damage to third party associated with handling and transportation. A copy of the insurance cover obtained may be provided to MIDPL on request.
13. Any Hazardous Empty Tank container should submit clean certificate; Otherwise Empty hazardous container will treat as loaded hazardous charges.

## FOREIGN VESSEL THC TARIFF FOR CONTAINERS

### 1 (A) STEVEDORING AND HANDLING CHARGES FOR GENERAL CONTAINER

#### 1.1 FCL/LCL/ICD CONTAINER (IMPORT / EXPORT)

|   | 20'           | 40'           | Over 40'<br>in length |
|---|---------------|---------------|-----------------------|
| a. Stevedoring Charges (INCL Lift On or Lift Off by quay crane including lashing and un-lashing services & Transport to CY and two lifts in CY) | USD<br>55.51  | USD<br>83.27  | USD<br>111.02         |
| b. Landing & Shipping Charges (see Note 2 below)  | INR<br>207.40 | INR<br>311.05 | INR<br>311.05         |

#### 1.2 EMPTY CONTAINER (EXPORT / IMPORT)

|   | 20'          | 40'          | Over 40'<br>in length |
|---|--------------|--------------|-----------------------|
| a. Stevedoring Charges (INCL Lift On or Lift Off by quay crane including lashing and un-lashing services & Transport to CY and two lifts in CY) | USD<br>36.30 | USD<br>54.45 | USD<br>72.60          |
| b. Landing & Shipping Charges (see Note 2 below)  | INR<br>51.85 | INR<br>77.80 | INR<br>77.80          |

#### Notes:

- a. Services in the case of item no (b) includes transportation from QC to yard and vice-versa, lift-on-lift-off at container yard from ITV and vice-versa, lift-on-lift-off for delivery/receipt to or from customers.
- b. The Landing and Shipping Charges for containers, payable to TNMB, are subject to escalation by 20 per cent at the end of every 3 (three) financial years.

#### 1.3 TRANSHIPMENT CONTAINER – FCL/LCL

|   | 20'           | 40'           | Over 40'<br>in length |
|---|---------------|---------------|-----------------------|
| a. Stevedoring Charges (INCL Lift On or Lift Off by quay crane including lashing and un-lashing services & Transport to CY and two lifts in CY) –Full Cycle | USD<br>69.39  | USD<br>104.09 | USD<br>138.78         |
| b. Landing and Shipping Charges (Half Cycle)  | INR<br>207.40 | INR<br>311.05 | INR<br>311.05         |

#### 1.4 TRANSHIPMENT CONTAINER – EMPTY

|   | 20'          | 40'           | Over 40'<br>in length |
|---|--------------|---------------|-----------------------|
| a. Stevedoring Charges (INCL Lift On or Lift Off by quay crane including lashing and un-lashing services & Transport to CY and two lifts in CY) –Full Cycle | USD<br>69.39 | USD<br>104.09 | USD<br>138.78         |
| b. Landing and Shipping Charges (Half Cycle)  | INR<br>51.85 | INR<br>77.80  | INR<br>77.80          |

**Notes:**

- a. A transshipment container sent to CFS or taken delivery locally shall be charged as that of the general container rate.
- b. Shut-out charge shall apply in addition to the above charges if the **vessel nomination** is changed, or if the vessel nomination is changed from a later vessel to an earlier vessel after the earlier vessel is berthed.
- c. A container originally declared as transshipment container, subsequently moved by rail or road will lose its identity as a transshipment container and shall be treated as a normal import container and prescribed charges as applicable shall be payable.

### **(B) STEVEDORING AND HANDLING CHARGES FOR HAZARDOUS CONTAINERS**

A premium of 50% is levied on Hazardous containers over the applicable handling charges prescribed for respective categories of containers.

### **(C) STEVEDORING AND HANDLING CHARGES FOR OOG / OVER DIMENSIONAL CONTAINERS**

| S.No | Particulars   | Rate   |
|------|---|--|
| 1    | Handled with Over-height Frames / Shackles / Slings | 1.5 times of the applicable handling charges for that category of container. |
| 2    | Break-Bulk  | Case to Case basis   |
| 3    | Colapser service                                    | 1.5 times of the applicable handling charges for that category of container  |
| 4    | Measuring of OOG containers                         | Rates applicable as per OOG containers                                       |

### **(D) STEVEDORING AND HANDLING CHARGES FOR CONTAINERS HANDLED ON MULTIPURPOSE VESSELS**

A premium of 50% is levied over the applicable handling charges prescribed for respective categories of containers.

## **2.0 OTHER CONTAINER CHARGES**

### **2.1 CHARGES FOR HANDLING HATCH COVERS FOR ONE OPERATION (BOTH OPENING AND CLOSING)**

|   |           |
|---|-----------|
| Hatch cover Handling charges (for opening and -Closing per piece) | USD 50.92 |
|---|-----------|

A premium of 50% is levied over the applicable charges for handling hatch cover on Multipurpose vessels.

## 2.2 CHARGES FOR RESTOW OF CONTAINERS / SHOE BIN

| Restow charges for container / shoe bin | 20'          | 40'          | Over 40' in length |
|---|--------------|--------------|--------------------|
|   | USD<br>36.21 | USD<br>54.32 | USD<br>72.42       |

A premium of 50% would be levied over and above for handling charges of Restows on Haz & ODC

## 2.3 REEFER RELATED AND OTHER GENERAL SERVICES

| Connection or disconnection Services on board a vessel (percontainer)  | USD 2.83    |             |                    |
|--|-------------|-------------|--------------------|
| Variance of temperature  | USD 37.34   |             |                    |
| <b>Facility for Pre Trip Inspection in Reefer Yard :</b><br>Reefer Yard Space, Supply of electricity for 1 shift(4hrs), and shifting charges if any.<br>PTI vendor to be arranged by the Shipping line / NVOCC, and PTI charges will be billed directly by vendor to Shipping line / NVOCC directly. | USD 37.34   |             |                    |
|  | 20'         | 40'         | Over 40' in length |
| Supply of electricity (including connection and disconnection, monitoring of temperature at reefer yard)per container per 4 hours shift or Part thereof  | USD<br>5.66 | USD<br>8.49 | USD<br>11.32       |

### Notes:

- 2.3.1 Above rate does not include parameter setting or repair & maintenance or malfunctioning reefers. Above charges are also applicable to restow reefer containers.
- 2.3.2 Facility for Pre-trip inspection of the reefer containers are optional services and shall be rendered when requested.

## 2.4 ADDITIONAL CHARGES FOR A SHUT OUT CONTAINER / RENOMINATION OF CONTAINERS

|               | 20'          | 40'          | Over 40' in length |
|---------------|--------------|--------------|--------------------|
| Per Container | USD<br>28.29 | USD<br>42.44 | USD<br>56.58       |

### Notes:

- 2.4.1 Above charge shall apply where an export container or a transshipment container or a re-export container is shut out and subsequently delivered out of MIDPL.
- 2.4.2 Where a container is shut out by one vessel and subsequently shipped on another vessel.
- 2.4.3 A container gated in next vessel and subsequently roll over to current vessel and shipped out.
- 2.4.4 Where a container is roll over from one vessel to another vessel due to PoD Skip (INKAT)

## 3.0 STORAGE

### 3.1 IMPORT-FCL,LCL & EMPTY

|                | 20'       | 40'       | Over 40' in length |
|----------------|-----------|-----------|--------------------|
| 1 - 4 days     | FREE      | FREE      | FREE               |
| 5 - 15 days    | USD 6.46  | USD 12.92 | USD 19.38          |
| 16 – 30 days   | USD 12.92 | USD 25.84 | USD 38.76          |
| Beyond 30 days | USD 25.83 | USD 51.66 | USD 77.49          |

### 3.2 EXPORT-FCL,LCL & EMPTY

|                | 20'       | 40'       | Over 40' in length |
|----------------|-----------|-----------|--------------------|
| 1 - 8 days     | FREE      | FREE      | FREE               |
| 9 -15 days     | USD 6.46  | USD 12.92 | USD 19.38          |
| 16 – 30 days   | USD 12.92 | USD 25.84 | USD 38.76          |
| Beyond 30 days | USD 25.83 | USD 51.66 | USD 77.49          |

### 3.3 ICD BY RAIL

| Load / Empty   | 20'       | 40'       | Over 40' in length |
|----------------|-----------|-----------|--------------------|
| 1 - 7 days     | Free      | Free      | Free               |
| 8 -15 days     | USD 6.46  | USD 12.92 | USD 19.38          |
| 16 – 30 days   | USD 12.92 | USD 25.84 | USD 38.76          |
| Beyond 30 days | USD 25.83 | USD 51.66 | USD 77.49          |

### 3.4 SHUTOUT – LOADED & EMPTY

|                | 20'       | 40'       | Over 40' in length |
|----------------|-----------|-----------|--------------------|
| First 15 days  | USD 6.46  | USD 12.92 | USD 19.38          |
| 16 – 30 days   | USD 12.92 | USD 25.84 | USD 38.76          |
| Beyond 30 days | USD 25.83 | USD 51.66 | USD 77.49          |

## 3.5 TRANSHIPMENT CONTAINERS

|                | 20'       | 40'       | Over 40' in length |
|----------------|-----------|-----------|--------------------|
| First 15 days  | FREE      | FREE      | FREE               |
| 16 – 30 days   | USD 6.46  | USD 12.92 | USD 19.38          |
| 31 - 45 days   | USD 12.92 | USD 25.84 | USD 38.76          |
| Beyond 45 days | USD 25.83 | USD 51.66 | USD 77.49          |

### Notes:

- I. Storage period for a container shall be reckoned from the day of landing upto the day of delivery for import containers and from the day of entry upto the day of loading for export containers. Day means calendar day.
- II. For purpose of calculating free time, Sundays, Customs Notified Holidays and the terminal's non-operating days shall be exclude.
- III. Total storage period for a shut out container shall be calculated from the day when the container has arrived in the terminal till the date of shipment.
- IV. A premium of 50% is levied on **Hazardous Containers** over the applicable storage charges prescribed for respective categories of containers.
- V. For **OOG / Over Dimensional Containers** the storage charges shall be based on the actual number of ground slots the respective container occupies under the respective slab as given above.
- VI. The storage charges shall not accrue for the period during which the MIDPL is not in a position to deliver / ship containers when requested by the user.
- VII. Transshipment containers whose status is subsequently changed to import FCL/LCL/empty shall be recovered at par with the relevant import containers storage tariff.
- VIII. For over dimensional containers including the windmill boxes, the storage charges shall be based on the actual ground slots the respective slab as given above.
- IX. Storage charges will be levied for containers Fumigated at the Container Yard beyond 10 free days.



## 4.0 MISCELLANEOUS CONTAINER CHARGES

| S.No  | ACTIVITY  | Rate                    |              |                         |
|-------|---|-------------------------|--------------|-------------------------|
|       |   | 20'                     | 40'          | Over 40' in length      |
| i     | Lift on/lift off in the CY  | INR 803.40              | INR 1,205.10 | INR 1,606.80            |
| ii    | Charges for shifting within the Terminal / Additional movement – Charges for extra movement / transportation of cargo / container | INR 1097.60             | INR 1646.40  | INR 2195.20             |
| iii   | Status Change – POD, Rail to road or vice versa   | INR 1097.60             | INR 1646.40  | INR 2195.20             |
| iv    | Late Gate – in  | INR 1097.60             | INR 1646.40  | INR 2195.20             |
| v     | On Wheel Customs Inspection – For opening of Container doors on-wheel under Customssupervision                                    | INR 469.70              | INR 469.70   | INR 469.70              |
| vi    | Examination Charges (Destuffing / stuffing for Customs Examination) – 25% or less than 25%  | INR 854                 | INR 1,281    | INR 1,708               |
| vii   | Examination Charges (Destuffing / stuffing for Customs Examination) – 50% or less than 50%  | INR 1,708               | INR 2,562    | INR 3,416               |
| viii  | Examination Charges (Destuffing/ stuffing for Customs Examination) – Above 50%  | INR 3,416               | INR 5,124    | INR 6,832               |
| ix    | Fixing/removal of seal  | Per Container           |              | INR 248.94              |
| x     | Fixing/ removal of Hazardous Sticker  | Per Container           |              | INR 124.47              |
| xi    | One Door Open Charges   | Per Container           |              | INR 746.82              |
| xii   | Fumigation Charges ( lolo and Transportation only)  | Per Container           |              | INR 3,507.81            |
| xiii  | Cancellation of documents - per EIR   | Per EIR                 |              | INR 124.47              |
| xiv   | Non-declaration/ Mis-declaration of Hazardous and Over- Dimensional Containers  | Per Container           |              | INR 3,734.12            |
| xv    | IGM / EGM Discrepancy Charges   | Per Amendment           |              | INR 2,263.10            |
| xvi   | Container weighment charges   | Per Weighment           |              | INR 84.87               |
| xvii  | Seal Verification Charges   | INR 700                 | INR 1400     | INR 1400                |
| xviii | RFID Mapping  | INR 100                 | INR 150      | INR 150                 |
| xix   | Twist lock cutting charges  | per Lock                |              | INR 2364.94             |
| xx    | Hot/special stowage   | For 20 Ft.<br>USD 46.39 |              | For 40 Ft.<br>USD 69.59 |
| xxi   | Yard Cleaning due to Leakage  |                         |              | INR 39,604.25           |
| Xxii  | TP to Import –Differential Charges & Vice Versa – (Status Change + THC Difference)  | USD 70.46               | USD 105.69   | USD 140.92              |

*Notes:*

1. "Fixing of Seal", Bottle seals shall be fixed on every container arriving at the terminal - by road/sea without a proper bottle seal on it, prior to allowing its entry. This shall be done without the written consent of the shipping line. The list of such containers on which a seal is affixed by the terminal shall be intimated to the lines.
2. "Fixing/removal of Hazardous Sticker", Hazardous stickers indicating IMCO class only shall be affixed on a container carrying hazardous cargo. Similarly old stickers on the container shall be removed from a container carrying non-hazardous cargo. In either case, the customer has to intimate in writing to MIDPL to undertake the said activity, within the terminal.
3. "One Door Open" charges is applicable for handling container which requires only one door to be kept open (e.g. Onion) and when door opening and securing is carried in the terminal.
4. Cancellation charges applies when EIR is cancelled at the request of customers.
5. Non-Declaration/Mis-declaration of Hazardous container. The Customer has to declare the hazardous nature of cargo as per IMCO rules and furnish the relevant hazardous details to MIDPL. The above charges are only for non-declaration/mis-declaration of the hazardous nature of the container. The liabilities and cost towards the consequences arising due to non- declaration or mis-declaration shall, however, be on the customer's account.
6. Discrepancy Charges will be applicable if any discrepancy/amendments are made in IGM/ EGM submitted by the agent against the quantity discharged/loaded.

## COASTAL VESSEL THC TARIFF FOR CONTAINERS

### 5.0 (A) STEVEDORING AND HANDLING CHARGES FOR GENERAL CONTAINER

#### 5.1 FCL /LCL CONTAINER (LOAD / DISCHARGE)

|   | 20'         | 40'         | Over 40'<br>in Length |
|---|-------------|-------------|-----------------------|
| a) Stevedoring Charges (INCL Lift On or Lift Off by quay crane including lashing and un-lashing services & Transport to CY and two lifts in CY) | INR 2155.60 | INR 3233.40 | INR 4311.20           |
| b) Landing & Shipping Charges   | INR 207.40  | INR 311.05  | INR 311.05            |

#### 5.2 EMPTY CONTAINER (LOAD / DISCHARGE)

|   | 20'         | 40'         | Over 40'<br>in Length |
|---|-------------|-------------|-----------------------|
| a) Stevedoring Charges (INCL Lift On or Lift Off by quay crane including lashing and un-lashing services & Transport to CY and two lifts in CY) | INR 1220.94 | INR 1831.41 | INR 2441.88           |
| b) Landing & Shipping Charges   | INR 51.85   | INR 77.80   | INR 77.80             |

#### 5.3 TRANSHIPMENT CONTAINER – FCL/LCL

|   | 20'         | 40'          | Over 40'<br>in Length |
|---|-------------|--------------|-----------------------|
| Handling Charges at Wharf & CY (Each Cycle) | INR 1078.18 | INR 1,617.27 | INR 2,156.36          |
| Landing & Shipping Charges ( Each Cycle)    | INR 207.40  | INR 311.05   | INR 311.05            |

#### 5.4 TRANSHIPMENT CONTAINER – EMPTY

|   | 20'         | 40'          | Over 40'<br>in Length |
|---|-------------|--------------|-----------------------|
| Handling Charges at Wharf & CY (Each Cycle) | INR 1078.18 | INR 1,617.27 | INR 2,156.36          |
| Landing & Shipping Charges (Each Cycle)     | INR 51.85   | INR 77.80    | INR 77.80             |

#### Notes:

- Services in the case of handling charges at Wharf & CY included transportation from QC to yard and vice-versa lift-on-lift-off at container yard from ITV and vice-versa, lift-on-lift-off for delivery/receipt to or from customers.

## (B) STEVEDORING AND HANDLING CHARGES FOR HAZARDOUS CONTAINERS

A premium of 50% is levied on Hazardous containers over the applicable handling charges prescribed for respective categories of containers.

## (C) STEVEDORING AND HANDLING CHARGES FOR OOG / OVER DIMENSIONAL CONTAINERS

| S.No | Particulars   | Rate   |
|------|---|--|
| 1    | Handled with Over-height Frames / Shackles / Slings | 1.5 times of the applicable handling charges for that category of container. |
| 2    | Break-Bulk  | Case to Case basis   |
| 3    | Colapser service                                    | 1.5 times of the applicable handling charges for that category of container  |
| 4    | Measuring of OOG containers                         | Rates applicable as per OOG containers                                       |

## (D) STEVEDORING AND HANDLING CHARGES FOR CONTAINERS HANDLED ON MULTIPURPOSE VESSELS

A premium of 50% is levied over the applicable handling charges prescribed for respective categories of containers.

### 6.0 OTHER CONTAINER CHARGES

#### 6.1 CHARGES FOR HANDLING HATCH COVERS FOR ONE OPERATION (BOTH OPENING AND CLOSING)

|   |              |
|---|--------------|
| Hatch cover Handling charges (for opening and -Closing per piece) | INR 1,284.20 |
|---|--------------|

A premium of 50% is levied over the applicable charges for handling hatch cover on Multipurpose vessels.

#### 6.2 CHARGES FOR RESTOW OF CONTAINERS / SHOE BIN

|   | 20'        | 40'          | Over 40'<br>In length |
|---|------------|--------------|-----------------------|
| Restow charges for container / shoe bin | INR 916.56 | INR 1,374.84 | INR 1,833.12          |

A premium of 50% would be levied over and above for handling charges of Restows on Haz & ODC

### 6.3 ADDITIONAL CHARGES FOR A SHUT OUT CONTAINER / RENOMINATION OF CONTAINERS

| Per Container | 20' | 40'          | Over 40' In length |
|---------------|-----|--------------|--------------------|
|               |     | INR 1,162.10 | INR 1,743.15       |

## 7.0 CONTAINER STORAGE CHARGES

### 7.1 IMPORT-FCL, LCL, & EMPTY

|                | 20'          | 40'          | Over 40' in length |
|----------------|--------------|--------------|--------------------|
| 1 - 4 days     | FREE         | FREE         | FREE               |
| 5 - 15 days    | INR 270.08   | INR 540.16   | INR 810.24         |
| 16 - 30 days   | INR 540.16   | INR 1080.32  | INR 1,620.48       |
| Beyond 30 days | INR 1,080.31 | INR 2,160.62 | INR 3,240.93       |

### 7.2 EXPORTY -FCL, LCL, & EMPTY

|                | 20'          | 40'          | Over 40' in length |
|----------------|--------------|--------------|--------------------|
| 1 - 8 days     | FREE         | FREE         | FREE               |
| 9 - 15 days    | INR 270.08   | INR 540.16   | INR 810.24         |
| 16 - 30 days   | INR 540.16   | INR 1080.32  | INR 1,620.48       |
| Beyond 30 days | INR 1,080.31 | INR 2,160.62 | INR 3,240.93       |

### 7.3 TRANSHIPMENT CONTAINERS

|                | 20'          | 40'          | Over 40' in length |
|----------------|--------------|--------------|--------------------|
| 1 - 15 days    | FREE         | FREE         | FREE               |
| 16 - 30 days   | INR 270.08   | INR 540.16   | INR 810.24         |
| 31 - 45 days   | INR 540.16   | INR 1080.32  | INR 1,620.48       |
| Beyond 45 days | INR 1,080.31 | INR 2,160.62 | INR 3,240.93       |

#### Notes:

- I. Storage period for a container shall be reckoned from the day of landing upto the day of delivery for import containers and from the day of entry upto the day of loading for export containers. Day means calendar day.
- II. For purpose of calculating free time, Sundays, Customs Notified Holidays and the terminal's non-operating days shall be exclude.
- III. Total storage period for a shut out container shall be calculated from the day when the container has arrived in the terminal till the date of shipment.
- IV. A premium of 50% is levied on Hazardous Containers over the applicable storage charges prescribed for respective categories of containers
- V. For OOG / Over Dimensional Containers the storage charges shall be based on the actual number of ground slots the respective container occupies under the respective slab as given above.

## 8.0 RORO

### 8.1 DEFENITION

|                                       |  |
|---------------------------------------|--|
| <b>Automobiles</b>                    | Any units which can move on wheels/chain including MAFI  |
| <b>Carrier</b>                        | Shipping Line, Vessel Owners, Charterers and their Agents  |
| <b>Landing &amp; Shipping Charges</b> | A charge levied against container/cargo or merchandise for passage on, over or through the MIDPL based on rates as prescribed by TNMB and as amended fromtime to time.                                       |
| <b>Pure Car Carriers</b>              | Vessels intended to load/discharge any wheeled cargo such as cars, automobiles, trucks, semi-trailer trucks, trailers or railroad cars, crusher units etc., that are driven on andoff the ship through ramps |

### 8.2 GENERAL

1. HDFC Bank TT Selling Rate will be used for dollar denominated tariff (first rate card published every-day). In case of holidays, the previous working day HDFC Bank TT Selling rate will be used.
2. All charges worked out shall be rounded off to the next higher rupee on the grand total of each bill

### 8.3 PORT FACILITATION CHARGES

| S.No | Category   | Ad valorem |
|------|--|------------|
| 1    | Two / Three Wheelers   | 0.23%      |
| 2    | <b>Light Motor Vehicles (Cars / Vans)</b>  |            |
| 2a.  | Light Motor Vehicles of value between 5000 – 6000 USD                                | 0.10%      |
| 2b.  | Light Motor Vehicles of value between 6001 – 7000 USD                                | 0.12%      |
| 2c.  | Light Motor Vehicles of value between 7001 – 8000 USD                                | 0.16%      |
| 2d.  | Light Motor Vehicles of value between 8001 – 11000 USD                               | 0.19%      |
| 2e.  | Light Motor Vehicles of value beyond 11001 USD                                       | 0.23%      |
| 3    | Heavy Motor Vehicles - Trucks / Buses  | 0.23%      |
| 4    | Heavy Motor Vehicles - Earthmoving equipment & other constructionrelated machineries | 0.29%      |
| 5    | Machinery / Equipment  | 0.29%      |

**Note: Ad valorem Levy:** Percentage rate of 'Ad valorem' unit shall be applicable as follows:

**Goods imported:** Percentage levy shall be on C.I.F value as assessed by Customs for Import goods.

**Goods exported:** Percentage levy shall be on F.O.B value as assessed by Customs for Export goods.

**Coastal goods:** The value to be taken for Ad valorem levy shall be given in the Coastal Bill of Lading/ Invoice

## 8.4 RAMP CHARGES

Ramp charges for RORO – Rs. 2,000/- per unit

## 8.5 DEMURRAGE CHARGES

Demurrage charges for automobile will be as set out below:

| Days           | Charges per vehicle per day or part of the day | Remarks   |
|----------------|--|---|
| Upto 20 Days   | Free   | The date of automobile entry into port and the date of export of automobile units will not be counted for levying of demurrage Charges. |
| 21 to 30 days  | Rs.24/-  |   |
| 31 to 60 days  | Rs.48/-  |   |
| Beyond 60 days | Rs. 96/-                                       |   |

### For Machineries / Earthmovers / Cranes

| Days   | Charge payable per Landing & Shipping (wharfage) unit per day or part thereof | Remarks   |
|--|---|---|
| Upto 20 Days   | Free  | The date of automobile entry into port and the date of export of automobile units will not be counted for levying of demurrage Charges. |
| For the first 7 days after the expiry of the free days | Rs. 13.00   |   |
| For the next 10 days                                   | Rs. 26.00   |   |
| For the next 30 days                                   | Rs. 39.00   |   |
| Thereafter   | Rs. 65.00   |   |

## 9.0 DRY CARGO STEVEDORING

### A. TARRIFF FOR STEVEDORING OF DRY CARGO VESSELS

| S.No | Equipment  | RATE                    | Remarks                        |
|------|--|-------------------------|--------------------------------|
| 1.   | STEEL COILS/STEEL SLABS/ TMT BARS /ANGLES/PLATES/PIPES UP to 30 MT. TO 25 MTOIL, PLATE, SLABS, ANGLES & BARS | Rs. 165/MT              | FOR STEVEDORING ONLY           |
| 2.   | BULK CARGO LIKE COAL/GRAIN/MINERALS ETC  | Rs. 120/MT              | FOR STEVEDORING ONLY           |
| 3.   | BAGGED AND UNITIZED CARGO  | Rs. 150/MT              | FOR STEVEDORING ONLY           |
| 4.   | Direct Delivery  | Rs 175/MT               | CARGO DELIVERY UNDER THE HOOK. |
| 5.   | Shore Crane charges under hook mode  | Rs. 25,000/- per Hour   | SWL/Capacity 75MT              |
| 6.   | RTG  | Rs. 10,000/- per Hour   | SWL/Capacity 40MT              |
| 7.   | FLT  | Rs. 2,500/- per Hour    | SWL/Capacity 3MT               |
| 8.   | Weigh Bridge charges   | Rs. 100/- Per weighment | SWL/Capacity 100 T             |
| 9.   | Inter shifting of break bulk   | Rs. 300/- per MT        | Minimum 100 MT                 |
| 10.  | Grab charges   | Rs. 18/- per MT         | -                              |
| 11.  | Hopper Charges   | Rs. 45/- per MT         | -                              |
| 12.  | Cargo Shifting Charges (Yard to Yard)  | Rs. 100/- per MT        | -                              |
| 13.  | Weighment Charges (During Shifting)  | Rs. 20/- per MT         | -                              |



## Berthing Policy & Tariff Structure

### B. PROJECT CARGO STEVEDORING RATES

|   |                           |                     |
|---|---------------------------|---------------------|
| 1.  | Port Facilitation Charges | 0.29% of FOB value. |
| 2.  | Stevedoring royalty       | Rs 150/ Freight Ton |
| <p>In case of export movement, Dunnage, Choking and lashing material cost shall be charged extra at actual if required.</p> <p>I. In case of any cargo re-stow is required during cargo operations; the stevedoring charges will be applicable as per port tariff, for applicable commodity on re-stow quantity only If same carried out on board without using transport /storage facility on wharf.</p> <p>II. In case of any cargo re-stow is required during cargo operation with storage at wharf (without any transportation) &amp; reloading with crane, single side stevedoring as per port tariff will be applicable for respective commodity on re-stow quantity. Single Stevedoring Charges.</p> <p>III. In case of any cargo re-stow is required during cargo operation with storage at wharf &amp; transportation for reloading, stevedoring as per port tariff ( Applicable for unloading &amp; reloading ) will be applicable for respective commodity &amp; in an addition to same, transportation charges/royalty will be applicable on case to case basis.-Twice Stevedoring charges + Terminal Handling Charges.</p> <p>IV. In case of movement like roll on roll off or direct offloading to another vessel, stevedoring charges will be applicable as per port tariff.</p> |                           |                     |

### C. CUSTOM DOCUMENTATION CHARGES

|   |  |          |
|---|--|----------|
| 1 | Custom Documentation charges when done by the port | Rs 10/MT |
|---|--|----------|

### D. WEIGHMENT CHARGES

|   |   |                  |
|---|---|------------------|
| 1 | Weighment charges including Load on/off and trailer | Rs 150/Weighment |
|---|---|------------------|

### E. STORAGE & DEMURRAGE CHARGES FOR BREAK BULK

#### DEMURRAGE CHARGES FOR OPEN AREA OTHER THAN PROJECT CARGO

| S.No  | When recoverable                             | Charge payable per Landing & Shipping (wharfage) unit per - Day or part thereof |
|---|--|---|
| 1. *Import goods left lying in MIDPL Port area  |  |   |
| A   | 7 Days free time                             | NIL   |
| B   | 8 <sup>th</sup> day to 15 <sup>th</sup> day  | Rs. 25/MT/day   |
| C   | 16 <sup>th</sup> day to 30 <sup>th</sup> day | Rs. 38/MT/day   |
| D   | > 30 days                                    | Rs. 50/MT/day   |
| Landing & Shipping charges (wharfage) is based on per tonne and demurrage shall bereckoned with on gross weight (per tonne or part thereof) |  |   |

## Berthing Policy & Tariff Structure

### DEMURRAGE CHARGES FOR OPEN AREA PROJECT CARGO

| S.No   | When recoverable                             | Charge payable per Landing & Shipping (wharfage) unit per day or part thereof |
|--|--|---|
| 1. *Import goods left lying in MIDPL Port area   |  |   |
| A  | 3 Days free time                             | NIL   |
| B  | 4 <sup>th</sup> day to 10 <sup>th</sup> day  | Rs. 75/MT/day   |
| C  | 11 <sup>th</sup> day to 20 <sup>th</sup> day | Rs. 100/MT/day  |
| D  | 21 <sup>st</sup> day to 30 <sup>th</sup> day | Rs. 200/MT/day  |
| E  | >30 days                                     | Rs. 300/MT/day  |
| Landing & Shipping charges (wharfage) is based on per tonne and demurrage shall be reckoned with on gross weight (per tonne or part thereof) |  |   |

### DEMURRAGE CHARGES FOR OPEN AREA OTHER THAN PROJECT CARGO

| S.No   | When recoverable                             | Charge payable per Landing & Shipping (wharfage) unit per day or part thereof |
|--|--|---|
| Export goods left lying in MIDPL Port area   |  |   |
| A  | 30 Days free time                            | NIL   |
| B  | 31 <sup>st</sup> To 37 <sup>th</sup> Day     | Rs. 18/MT/day   |
| C  | 38 <sup>th</sup> day to 40 <sup>th</sup> Day | Rs. 37/MT/day   |
| D  | > Thereafter                                 | Rs. 111/MT/day  |
| Landing & Shipping charges (wharfage) is based on per tonne and demurrage shall be reckoned with on gross weight (per tonne or part thereof) |  |   |

## DEMURRAGE CHARGES FOR OPEN AREA - PROJECT CARGO

| S.No  | When recoverable                             | Charge payable per Landing & Shipping (wharfage) unit per day or part thereof |
|---|--|---|
| Export goods left lying in MIDPL Port area  |  |   |
| A   | 30 Days free time                            | NIL   |
| B   | 31 <sup>st</sup> to 37 <sup>th</sup> Day     | Rs. 75/MT/day   |
| C   | 38 <sup>th</sup> to 47 <sup>th</sup> Day     | Rs. 100/MT/day  |
| D   | 48 <sup>th</sup> Day to 57 <sup>th</sup> Day | Rs. 200/MT/day  |
| E   | >Thereafter                                  | Rs. 300/MT/day  |
| Landing & Shipping charges (wharfage) is based on per tonne and demurrage shall bereckoned with on gross weight (per tonne or part thereof) |  |   |

### Notes:

#### 1. \*Import Free Days for Open Area

Seven working days in the case of Open Storage (Non project cargo) excluding customs notified holidays and port non - working days are free after complete discharge of a vessel's cargo, or the date when the last package was put over side.

#### 2. Export Free days for Open Area

Export cargo for a vessel other than Containerized Export Cargo

- A free period of thirty days (excluding customs notified holidays and port non-working days) from the actual day of receipt of the goods in transit area restricted to the day prior to the date the vessel commences loading of Export cargo.
- From the day the vessel commences loading of the Export cargo to the day the vessel completes loading shall also be free period.

#### 3. Penal Demurrage Charges for Open Area

If at any time MIDPL foresees serious congestion in its storage areas to the detriment of the rapid movement of goods through the Port, it may direct the owners or consignees of any specified goods to remove such goods from the MIDPL premises within a given time.

Should the goods not be so removed MIDPL may charge them demurrage thereon upto Rs.79.00 per unit or Ton per day whichever is higher, until the goods shall have been removed from the MIDPL premises.

Also, if the aforesaid charge should prove inadequate to ensure the removal of the goods, the MIDPL may itself removethem from the transit areas at the expense of the owners and shall stack them in any space within its premises at the risk of the owners.

### Sludge & Garbage Vendors detail

| S.No | Vendor Name                | Address  | Contacts                       |
|------|----------------------------|--|--------------------------------|
| 1    | M/s Supreme Petro products | # 9, Eguvarpalayam village -1, Gummidipoondi Taluk, Thiruvallur Dist - 600601        | supremepetroproducts@gmail.com |
| 2    | M/s Nisa Enterprises       | NO.67/141, THOPPAI STREET, ROYAPURAM, CHENNAI-600 013                                | sidhiqabdulrasheed@gmail.com   |
| 3    | M/s PMB & Co               | 2/168F, Sivaarajapuram Tullukkarkulam Road, Abiseka Patti, Gandhinagar Post-27008.TN | pmboilcomp@gmail.com           |
| 4    | M/s Thirupathi Oil Company | New No. 19, Burkit Road, T Nagar, Chennai - 600017                                   | sandhiyaenviro@gmail.com       |
| 5    | M/s Vaast Enterprises      | 2/384, 11th Cross Street, Singaravelar Salai, Chinna Neelangarai, Chennai - 600 115  | vmmarineso1@gmail.com          |
| 6    | M/s Atlas Corporation      | No - 2, MGR Nagar, Chinna Andan Kovil Road, Karur, Tamil Nadu - 639001               | Atlascorp kattupalli@gmail.com |

## VII Contact details

|   |                    |  |   |
|---|--------------------|--|---|
| 1 | COO                | Capt. Madhanmohan Thummala             | Mob : 9043286795<br>Email: madhanmohan.t@adani.com          |
| 2 | Marine Services    | Capt. N Padhi (HOD/ PFSO)              | Mob : 9704123702<br>Email: n.padhi@adani.com                |
|   |                    | Mr. Anantha Ramakrishnan               | Mob : 9841044132<br>Email: akppl.pocincharge@adani.com      |
|   |                    | Marine Control                         | Mob : 7823941713<br>Email: Akppl.marinecontrol@adani.com    |
|   |                    | Capt. Divya Gupta                      | Mob : 6359631088<br>Email: divya.gupta@adani.com            |
| 3 | Container Terminal | Operations In Charge                   | Mob: 9940374101<br>Email: gmops.south@adani.com             |
|   |                    | Mr. Sandeep Shah                       | Mob : 9687695756<br>Email: sandeep.shah@adani.com           |
| 4 | Liquid Terminal    | Mr. S Parthiban                        | Mob : 9714895459<br>Email: MIDPL-LTOpsManager@adani.com     |
|   |                    | Operations In charge                   | Mob : 7299990896<br>Email: drycargoin.midpl@adani.com       |
| 6 | Marketing          | Mr. Rajkumar (Container)               | Mob : 9884305901<br>Email: Rajkumar.R@adani.com             |
|   |                    | Mr Prashant (Container)                | Mob : 9962595918<br>Email: Prashanth.Mani@adani.com         |
|   |                    | Mr Sidhartha Kumar Sarangi (Dry Cargo) | Mob : 9704374449<br>Email: sidharthakumar.sarangi@adani.com |
|   |                    | Mr. Mukul Dekhane (Liquid Cargo)       | Mob : 9821898934<br>Email: mukul.dekhane@adani.com          |
| 7 | CFS                | Operations In Charge                   | Mob : 9979899086<br>Email: Hodcfs.ke@adani.com              |
| 8 | Safety and Fire    | Operations In Charge                   | Mob : 8850086946<br>Email: safetyhead.ke@adani.com          |
| 9 | Head Security      | Col. Vikram Pandher                    | Mob : +91 9821860493<br>Email: vikram.pandher@adani.com     |

|   |  |
|---|--|
| Port Office<br>Marine Infrastructure Developer Pvt Ltd<br>(Kattupalli Port)<br>Kattupalli Village, Ponneri Taluk,<br>Thiruvallur District 600 120,<br>Tamil Nadu, India | Registered Office:<br>Ramcons Fortuna Towers,<br>4th floor No 1/2, Kodambakkam High Road<br>Nungambakkam, Chennai 600034 |
|---|--|